

OREGON CORNER RESTORATION FORM

COUNTY: Umatilla DATE: 12/27/01

CORNER DESIGNATION: G-9, West 1/4 Corner of Section 9, T4N., R35E., W.M..

PREVIOUS RENEWALS/SURVEYS ETC.: Corner originally established by Wm. H. Odell, under Contract No. 114, dated July 2nd, 1866. Record states: Set post Cor. for 1/4 Sec.; drove charred stake, dug pits and raised mound as per instructions.

MONUMENT AND ACCESSORIES FOUND:
None.

MONUMENT MARKING DETAIL:

T4N R35E
1/4
S8|S9
2001
PLS 1106

MONUMENT SET:

Held intersection of centerline of County Road extending West and fence line extending North as best remaining evidence of original corner location. At reestablished corner position, set a 2 1/2" brass cap on 1" x 30" galvanized iron pipe, 38" in the ground. Brass cap is set 8" below ground and is marked as shown in "Monument Marking Detail".

From which:

A brass washer stamped "PLS 1106", nailed 1 foot above ground to a cut off power pole used as a gate post bears North, 15.7 feet.

A purple "deep 1" magnet buried 18" in the ground in farmed field bears S 40 1/2° E, 41.7 feet.

A blue "deep 1" magnet buried 18" in the ground in a farmed field bears S 42 1/2° W, 59.7 feet.

A brass washer stamped "PLS 1106", nailed 1 foot above ground to a cut off power pole used as a gate post, bears N 66° W, 40.8 feet.

Nailed bearing object signs to cut off power pole accessories. Nailed "witness" sign to power pole North of corner. Buried bearing object signs alongside the "deep 1" magnets.

LOCATION AND COMMENTS:

County Road records were consulted. The road notes call for the County Road going through this corner but there are no indications the corner was recovered or reestablished.

OREGON STATE PLANE CO-ORDINATES, North Zone, NAD 83 (91), International Feet:

N: 799405.86
E: 8722852.22

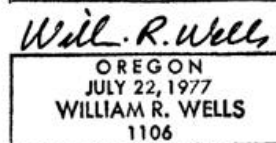
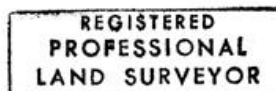
FIRM: William R. Wells, PLS
P.O. Box 1696
Pendleton, OR 97801

COMPASS DECLINATION: 18° East

Witnesses: Jason Wells, LSIT
Mark Hammersla

4N35G9

Surveyor's Seal



renews 6-30-02

02-12-C