

**OREGON CORNER RESTORATION FORM**

COUNTY: Umatilla DATE: 1/03/02

CORNER DESIGNATION: E-3, the North 1/4 Corner of Section 7.

PREVIOUS RENEWALS/SURVEYS ETC.: Corner originally established by Wm. H. Odell, under Contract No. 114, dated July 2nd, 1866. Record states: Set post Cor. for 1/4 Sec.; drove charred stake, dug pits and raised mound as per instructions. In 1897, John Kimbrell, County Surveyor, under Survey recorded at Record of Private Surveys Book 1, Page 347, determined the corner position from testimony and remonumented with a 20 x 5 x 5" stone. Reestablished corner is located 40.25 chains from the Southeast Corner of Section 6.

MONUMENT AND ACCESSORIES FOUND: None. The corner area has been extensively farmed.

**MONUMENT MARKING DETAIL:**

T4N R35E  
S6  
1/4-----  
S7  
2002  
PLS 1106

**MONUMENT SET:**

This corner was "stubbed" by the original surveyor and traditional reestablishment methods can not be used. I reestablished this corner holding an East-West field berm for latitude and the record distance of 40.25 chains (2656.50 feet), per Kimbrell Survey, from the Southeast corner of Section 6. At position determined by survey, set a 2 1/2" brass cap on a 1 1/2" x 30" galvanized iron pipe with cap buried 20" below ground level, marked as shown in monument marking detail. From which:

- A silver deep-1 magnet, buried 20" in ground, bears N 50° E, 35.8 feet.
  - A purple deep-1 magnet, buried 20" in ground bears S 44° E, 36.8 feet.
  - A blue deep-1 magnet, buried 20" in ground bears S 54° W, 39.8 feet.
  - An orange deep-1 magnet, buried 20" in ground bears N 49 1/2° W, 42.6 feet.
- Buried bearing object signs alongside the deep-1 magnets.

LOCATION AND COMMENTS: Corner is located in an East-West field berm.

OREGON STATE PLANE COORDINATES, North Zone, NAD 83(91), International Feet:

N: 802101.48  
E: 8714825.54

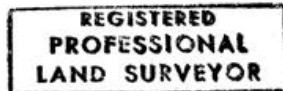
FIRM: William R. Wells, PLS  
P.O. Box 1696  
Pendleton, OR 97801

COMPASS DECLINATION: 18° East

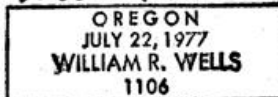
Surveyor's Seal

Witnesses: Jason Wells, LSIT  
Mark Hammersla

4N35E3



*William R. Wells*



*renews 6-30-02*

*02-12-C*