

OREGON CORNER RESTORATION FORM

Section 1 Township 4 N Range 34 E

County Umatilla Date 1-27-88

*C-25*

CORNER DESIGNATION

- Condition Report Only
- Not Found
- Renewed
- Unrecorded
- Surveyed In
- Referenced Out

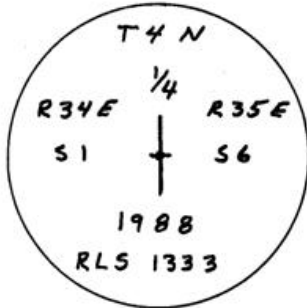
Previous Renewals/Surveys, etc. Originally a post, pits, and mounds (1865)

Monument(s) & Accessories Found: (Condition and Source)

This corner falls on a very slight ridge, like there has been an old fence line east and west a very long time ago. Nothing N. - S. and the whole area is being cultivated.

Monument Detail

Sketch



*(NONE)*

Monument Set (Procedures and Description)

Set 1" x 30" G. I. P. w/flared base and 2 1/2" brass cap 6" above the ground. Set steel fence post near the B.C. with yellow witness sign attached.

New Accessories

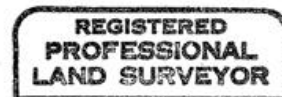
(None) No witness corners were set. This corner is in the middle of a wheat field and more than 1000 ft. from any fence line or plow line.

Location & Comments

Corner is located in middle of a wheat field

Compass Declination  
Firm/Agency Don Staebler  
Engineer - Surveyor  
Address 1532 S. W. 41st  
Pendleton, OR 97801

Surveyor's Seal



*Donald L. Staebler*



RECEIVED BY

Umatilla County Surveyor

Date 2-88

Rec'd By [Signature]

No. 88-9-A

Party Chief Don Staebler

Notes \_\_\_\_\_

Witness \_\_\_\_\_