

OREGON CORNER RESTORATION FORM

SECTION 36 TOWNSHIP 4 NORTH RANGE 29 EAST X-25

COUNTY : UMATILLA DATE 11-2001

CORNER DESIGNATION

EAST 1/4

- CONDITION REPORT ONLY
- NOT FOUND
- RENEWED
- UNCOVERED
- SURVEYED IN
- REFERENCED

PREVIOUS RENEWALS / SURVEYS, ETC.

ORIGINALLY SURVEYED IN 1860 BY DAVENPORT UNDER CONTRACT #101. HE SET A POST IN A MOUND OF EARTH AND A CHARRED STAKE.

IN 1998 EDWARDS SET A 1"X30" IRON PIPE WITH A 2 3/8" BRASS CAP.

MONUMENTS AND ACCESSORIES FOUND: CONDITION AND SOURCE

FOUND A 2 3/8" BRASS CAP STAMPED AS BELOW.
FROM WHICH:

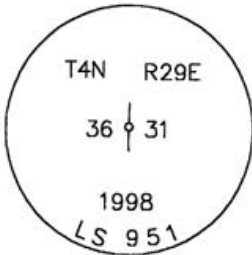
AN ALUMINUM TAG #951 ON A POWER POLE BEARS S 12°55'43" W 109.26 FEET.

A 5/8"X30" IRON REBAR WITH PLASTIC CAP #951 BEARS S 78°45'35" W 233.42 FEET.

AN ALUMINUM TAG #951 ON A POWER POLE BEARS N 5°55'23" W 218.96 FEET.

A 5/8"X30" IRON REBAR WITH PLASTIC CAP #951 BEARS N 89°47'51" E 68.17 FEET.

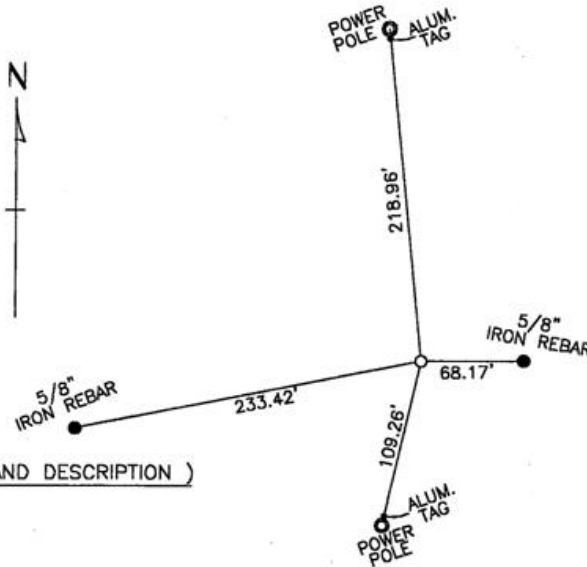
MONUMENT DETAIL



NAD 83/91
OREGON STATE PLANE
INTERNATIONAL FEET
775165.7922
8553603.5097

MONUMENT SET (PROCEDURES AND DESCRIPTION)

SKETCH



NEW ACCESSORIES FROM WHICH

LOCATION AND COMMENTS
FROM AN INTERSECTION OF OLD
STAGE ROAD AND A LARGE POWER
LINE, GO NORTH ALONG POWER
LINE 0.5 MILES TO CORNER.

COMPASS DEC.

FIRM/AGENCY
EDWARDS SURVEYING
P.O. BOX 763
HERMISTON, OREGON 97838

PARTY CHIEF
CURTIS FAVOREL

NOTES

WITNESS
WALT MUNDELL

Umatilla County Surveyor
Date 12-01
Made By KK
No. 01-213-9

SURVEYOR'S SEAL

REGISTERED
PROFESSIONAL
LAND SURVEYOR

G. Dennis Edwards

OREGON
JULY 16, 1971
G. DENNIS EDWARDS
9 5 1
RENEWS 12/31/2001