

OREGON CORNER RESTORATION FOOTING

SECTION 36 TOWNSHIP 4 NORTH RANGE 29 EAST V-25

COUNTY : UMATILLA DATE 11-2001

CORNER DESIGNATION

NE CORNER

- CONDITION REPORT ONLY
- NOT FOUND
- RENEWED
- UNCOVERED
- SURVEYED IN
- REFERENCED

PREVIOUS RENEWALS / SURVEYS, ETC.

ORIGINALLY SURVEYED IN 1861 BY CAMBELL UNDER CONTRACT #95. HE SET A POST IN A MOUND OF EARTH AND A CHARRED STAKE.

IN 1998 EDWARDS SET A 1"X30" IRON PIPE WITH A 2 3/8" BRASS CAP BY SINGLE PROPORTION.

MONUMENTS AND ACCESSORIES FOUND: CONDITION AND SOURCE

FOUND A 2 3/8" BRASS CAP STAMPED AS BELOW.
FROM WHICH:

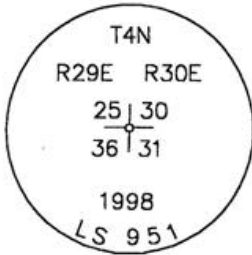
AN ALUMINUM TAG #951 SET IN A 18" LOCUST TREE BEARS N 64°06'08" E 71.34 FEET.

A 5/8"X30" IRON REBAR WITH PLASTIC CAP #951 BEARS S 46°53'27" W 41.00 FEET.

AN ALUMINUM TAG #951 ON A POWER POLE BEARS N 0°58'16" W 171.39 FEET.

AN ALUMINUM TAG #951 ON A POWER POLE BEARS S 2°17'54" W 150.85 FEET.

MONUMENT DETAIL



NAD 83/91
OREGON STATE PLANE
INTERNATIONAL FEET
777805.1634
8553560.1552

MONUMENT SET (PROCEDURES AND DESCRIPTION)

NEW ACCESSORIES FROM WHICH

LOCATION AND COMMENTS

AT AN INTERSECTION OF STAGE
GULCH ROAD WITH A LARGE POWER
LINE, GO SOUTH ALONG POWER
LINE 300'± TO CORNER.

COMPASS DEC.

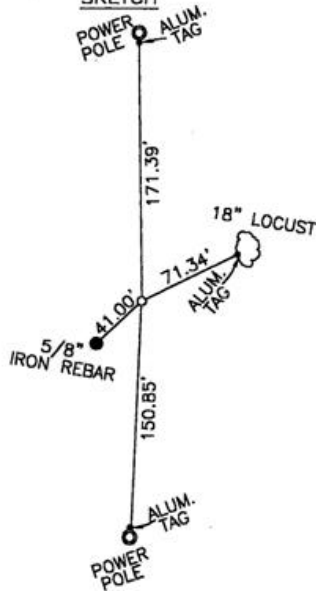
FIRM/AGENCY
EDWARDS SURVEYING
P.O. BOX 763
HERMISTON, OREGON 97838

PARTY CHIEF
CURTIS FAVOREL

NOTES

WITNESS
WALT MUNDELL

SKETCH



RECEIVED BY

Umatilla County Surveyors

Date 12-01

Rec'd By KE

No. 01-213-9

SURVEYOR'S SEAL

REGISTERED
PROFESSIONAL
LAND SURVEYOR

G. Dennis Edwards

OREGON
JULY 16, 1971
G. DENNIS EDWARDS
9 5 1

RENEWS 12/31/2001