

OREGON CORNER RESTORATION FORM

Section 03, 10 Township 4N Range 30E  
 County Umatilla Date: 05-08-2006

Corner Designation: 4N30E E15

Condition Report Only  
 Not Found  
 Remonumented  
 Unrecorded  
 Surveyed In  
 Referenced Out

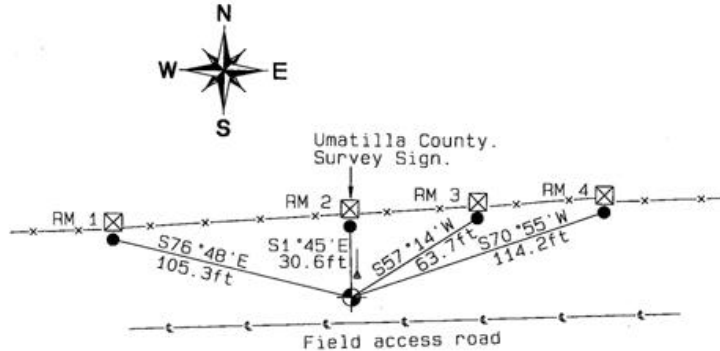
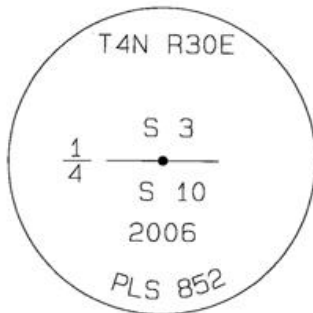
Previous Renewals / Surveys, etc.

08-1861 D.Payne GLO(100) "Set Charred Stake with mound trench and pits"

Monument and Accessories Found: ( condition and source )

None

DIAGRAM



- ☒ Wood fence post
- 5/8" dia. x 24" long Iron Rebar with a 2.5" dia. Orange plastic cap
- ⌋ 5 foot steel T-Post with a Umatilla County Survey Sign.
- ⊥ Wire Fence line
- ◆ Set 2-3/8" dia. Brass cap on a 1-1/2" x 30" long Galvanized pipe monument.

MONUMENT (S) AND ACCESSORIES SET (Procedures and Description)

Set a 2-3/8" dia. Brass Capped monument (stamped as shown) on a 1-1/4" ID x 30" long galvanized pipe flush with the ground surface.  
 Set a Umatilla County Survey Marker sign on 5' steel T-Post. Facing South toward corner.

REFERENCES SET:

Set four (5/8" dia x 24" long Iron rebar with a 2.5" dia. Orange plastic cap) to the bearings and distances from monument shown above in the sketch.

Made GPS tie to TRI Stations  
 LAURILA RESET RB 1379 and  
 WALLS RB 1396  
 Latitude 45°51'01.556280"N  
 Longitude 119°02'50.859689"W  
 NAD 83(1991)

Oregon State Plane Coord. - North Zone  
 Northing 799490.60  
 Easting 8572215.45  
 Ortho Height 953.94  
 Ellipsoidal Height 884.67

Location and Comments

Compass Declination  
 18°E

Surveyors Seal

Proceed 1.1 miles South on Umatilla County Road 1172 (KOSMOS ROAD) around the curve West. Turn South along access road East. Thence 0.45 miles to the South access road along the East side Section 3. Thence 0.92 miles to Section 3 South fence line. Thence West 0.50 miles to the 1/4 corner monument.

REGISTERED  
 PROFESSIONAL  
 LAND SURVEYOR

RECEIVED BY:

Firm / Agency

*David L Haddock*

Date: 05-06  
 Rec'd By: \_\_\_\_\_  
 No.: 06-263-C

Haddock Surveying  
 P. O. Box 1574  
 Pendleton, OR 97801  
 (541) 276-2174

OREGON  
 JULY 12, 1968  
 DAVID L. HADDOCK  
 852

RENEWS 6-30-07