

OREGON CORNER RESTORATION FORM

Section 04,03 Township 4N Range 30E  
 County Umatilla Date: 05-08-2006

Corner Designation: 4N30E C13

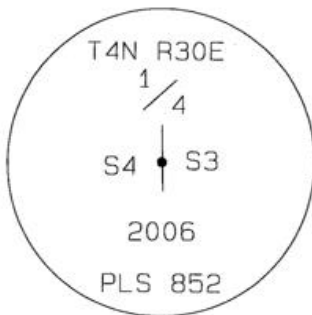
Condition Report Only  
 Not Found  
 Remonumented  
 Unrecorded  
 Surveyed In  
 Referenced Out

Previous Renewals / Surveys, etc.

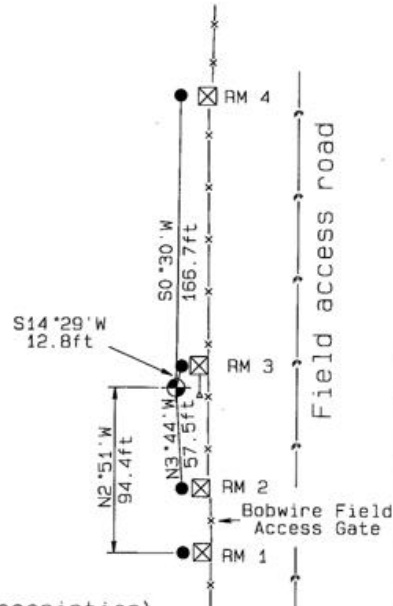
08-1861 D.Payne GLO (100) "Set Charred Stake with mound trench and pits"  
 10-1909 J.Kimbrell Bk2 (296) Surveyed by corner without notation.

Monument and Accessories Found: ( condition and source )  
 Current fenceline and old gate posts undisturbed since the 1950's as by the testimony of a property owner. Placed 2 RM's by old gate posts to monument position.

DIAGRAM



- x— Wire Fence line
- Set 2-3/8" dia. Brass cap on a 1-1/2" x 30" long Galvanized pipe monument.
- ⊠ Wood fence post
- 5/8" dia. x 24" long Iron Rebar with a 2.5" dia. Orange Plastic cap.
- ↓ 5 ft steel T-Post with a Umatilla County Survey sign.



MONUMENT (S) AND ACCESSORIES SET (Procedures and Description)

Set a 2-3/8" dia. Brass Capped monument (stamped as shown) on a 1-1/4" ID x 30" long galvanized pipe flush with the ground surface. Set a 5 ft steel T-Post with a Umatilla County Survey Marker sign facing West toward the monument.

REFERENCES SET:

Set four (5/8" dia x 24" long Iron rebar with a 2.5" dia. Orange plastic cap to the bearings and distances from monument shown above in the sketch.

Made GPS tie to TRI Stations	Oregon State Plane Coord. - North Zone
LAURILA RESET RB 1379 and	Northing 802069.40
WALLS RB 1396	Easting 8569527.21
Latitude 45°51'27.486897"N	Ortho Height 875.32
Longitude 119°03'28.181773"W	Ellipsoidal Height 805.98
NAD 83 (1991)	

Compass Declination  
 18°E

Location and Comments

Proceed 2.1 miles South on Umatilla County Road 1172 (KOSMOS ROAD) . Turn South along access road South along the West fence line of Section 3 a distance of 0.44 miles to the West quarter corner of Section 3..

Surveyors Seal

REGISTERED  
 PROFESSIONAL  
 LAND SURVEYOR

*David L. Haddock*

OREGON  
 JULY 12, 1968  
 DAVID L. HADDOCK  
 852

RENEWS 6-30-07

RECEIVED BY:

Firm / Agency

Date: 05-06

Rec'd By:

No.: 06-263-C

Haddock Surveying  
 P. O. Box 1574  
 Pendleton, OR 97801  
 (541) 276-2174