

OREGON CORNER RESTORATION FORM

Section 03 Township 4N Range 30E  
 County Umatilla Date: 05-08-2006

Corner Designation: 4N30E A15

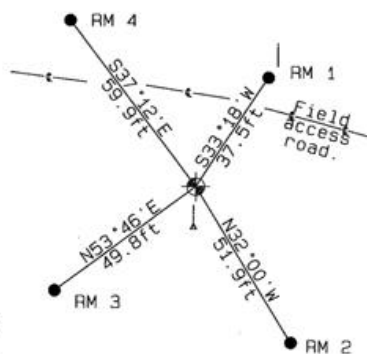
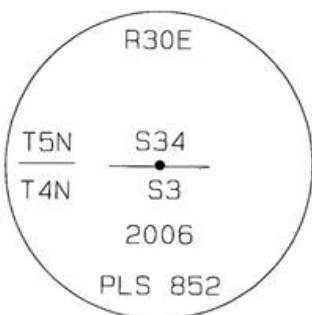
_____	Condition Report Only
_____	Not Found
_____	Remonumented
_____	Unrecorded
_____X_____	Surveyed In
_____X_____	Referenced Out

Previous Renewals / Surveys, etc.

02-1860 H. Maxon/J. Hurd STD PARALLEL (50) "West on South boundary of Sect. 34. Set post for 1/4 Sects. corner in mound of earth, trench & pits as per instructions."

Monument and Accessories Found: ( condition and source )  
 Post not found. Plowed field.

DIAGRAM



- ↖ Access Road centerline
- ⊕ Set 2-3/8" dia. Brass cap on a 1-1/2" x 30" long Galvanized pipe monument.
- ☒ Wood fence post
- 5/8" dia. x 24" long Iron Rebar with a 1.3" dia. Red Plastic cap.
- | 6' Steel T-post with a Bearing Object sign.
- ↓ Set 5' Steel T-Post with a Umatilla County Survey Sign.

MONUMENT(S) AND ACCESSORIES SET (Procedures and Description)

Set a 2-3/8" dia. Brass Capped monument (stamped as shown) on a 1-1/4" ID x 30" long galvanized pipe flush with the ground surface.  
 Set a 5' Steel T-post with a Umatilla County Survey Marker sign facing North toward the monument.

REFERENCES SET:

Set four (5/8" dia x 24" long Iron rebar with a 1.3" dia. Red Plastic cap) to the bearings and distances from monument shown above in the sketch.

Made GPS tie to TRI Stations	Oregon State Plane Coord. - North Zone
LAURILA RESET RB 1379 and	Northing 804416.66
WALLS RB 1396	Easting 8572149.07
Latitude 45°51'50.192769"N	Ortho Height 888.84
Longitude 119°02'50.546092"W	Ellipsoidal Height 819.53
NAD 83 (1991)	

Compass Declination  
 18°E

Location and Comments

Proceed 1.1 miles South on Umatilla County Road 1172 (KOSMOS ROAD). Turn South along access road East. Thence 0.15 miles to the South access road. Thence 0.1 miles to a West field access road. Thence West 0.48 miles to the monument.

Surveyors Seal

REGISTERED  
 PROFESSIONAL  
 LAND SURVEYOR

*David L. Haddock*

OREGON  
 JULY 12, 1968  
 DAVID L. HADDOCK  
 852

RENEWS 6-30-07

RECEIVED BY:

Firm / Agency

Date: 05-06  
 Rec'd By: \_\_\_\_\_  
 No.: 06-263-C

Haddock Surveying  
 P. O. Box 1574  
 Pendleton, OR 97801  
 (541) 276-2174