

OREGON CORNER RESTORATION FORM

SECTION 1,6,36 TOWNSHIP 4,5 NORTH RANGE 29,30 EAST A-25

COUNTY : UMATILLA DATE 02/02

CORNER DESIGNATION

SECTION CORNER

CONDITION REPORT ONLY

NOT FOUND

RENEWED

UNCOVERED

SURVEYED IN

REFERENCED

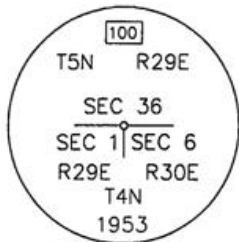
PREVIOUS RENEWALS / SURVEYS, ETC.

NONE FOUND.

MONUMENTS AND ACCESSORIES FOUND: CONDITION AND SOURCE

A 2 3/8" BRASS CAP LIES N 89°55'55" E, 507.54 FEET.

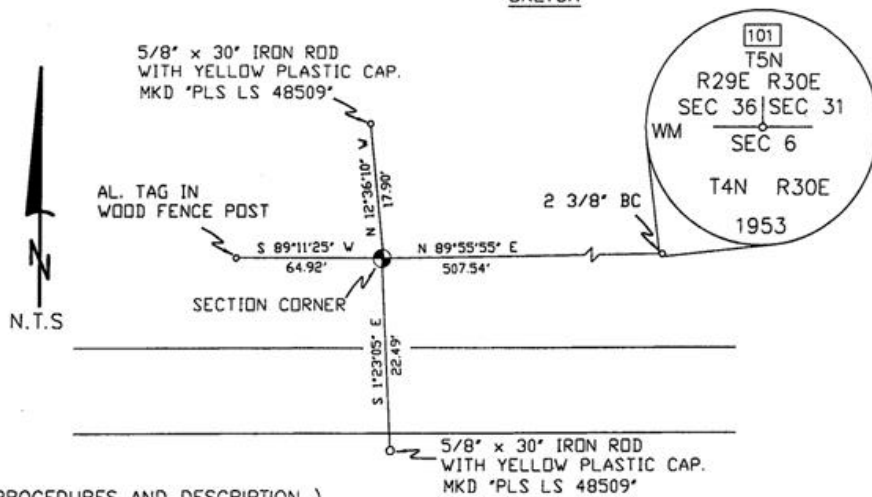
MONUMENT DETAIL



NAD 83/91
OREGON STATE PLANE
INTERNATIONAL FEET

804176.1049
8553135.5788

SKETCH



MONUMENT SET (PROCEDURES AND DESCRIPTION)

NEW ACCESSORIES FROM WHICH

A 5/8" x 30" IRON ROD WITH A YELLOW PLASTIC CAP MKD "PLS LS 48509" LIES S 1°23'05" E, 22.49 FEET.
AN ALUMINUM TAG STAMPED "PLS LS 48509" ON A WOOD FENCE POST LIES S 89°11'25" W, 64.92 FEET.
A 5/8" x 30" IRON ROD WITH A YELLOW PLASTIC CAP MKD "PLS LS 48509" LIES N 12°36'10" W, 17.90 FEET.

LOCATION AND COMMENTS

FROM INTERSECTION OF KOSMOS ROAD AND NORTH LOOP ROAD GO EAST 1/2 MILE ON KOSMOS ROAD, THEN CONTINUE NORTH ON KOSMOS ROAD FOR 1 MILE TO A SMALL DIRT FARM ROAD THEN GO WEST 600 FEET DOWN FENCE LINE TO CORNER.

COMPASS DEC.

FIRM/AGENCY
PRIMM LAND SURVEYING
P.O. BOX 1322
HERMISTON, OREGON 97838

PARTY CHIEF
KEITH P. PRIMM

NOTES

WITNESS
BRIT L. PRIMM

SURVEYOR'S SEAL

REGISTERED
PROFESSIONAL
LAND SURVEYOR

Brit L. Primm
OREGON
JULY 13, 1999
BRIT L. PRIMM
48509

EXPIRATION DATE: 12/31/02

03-52-9