

OREGON CORNER RESTORATION FORM

SECTION 4,5,32,33 TOWNSHIP 4 & 3 NORTH RANGE 29 EAST Z-9

COUNTY : UMATILLA DATE 01/02

CORNER DESIGNATION

SECTION CORNER

- CONDITION REPORT ONLY
- NOT FOUND
- RENEWED
- UNCOVERED
- SURVEYED IN
- REFERENCED

PREVIOUS RENEWALS / SURVEYS, ETC.

ORIGINALLY SURVEYED IN 1859 BY GATES UNDER CONTRACT #84. HE SET A POST IN A MOUND OF EARTH.
IN 1984 KRUMBEIN SET A BRASS CAP STAMPED AS BELOW.

MONUMENTS AND ACCESSORIES FOUND: CONDITION AND SOURCE

A 2 1/2" B.C. W. C. STAMPED AS BELOW LIES N 45°08'33" W, 38.00 FEET.
A 2 1/2" B.C. W. C. STAMPED AS BELOW LIES S 52°38'40" W, 35.12 FEET.
AN ALUMINUM TAG #951 ON A POWER POLE LIES N 26°08'45" E, 43.54 FEET.
A VALVE STEM ON WEST SIDE OF SYPHON BOX LIES S 44°55'05" E, 36.26 FEET.

MONUMENT DETAIL

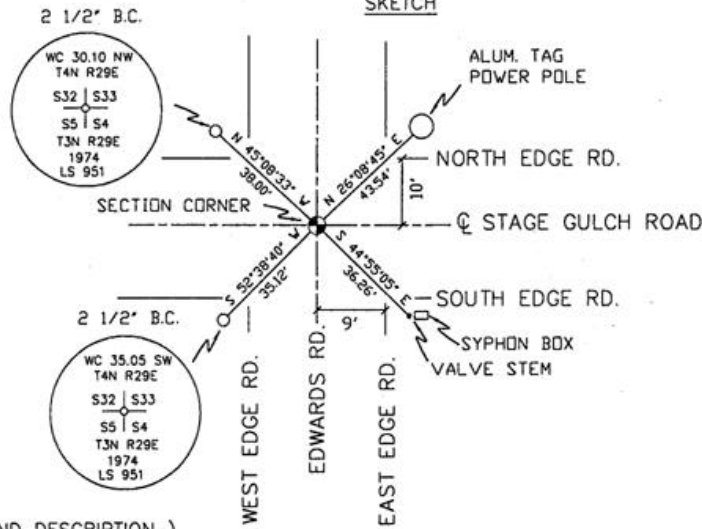


NAD 83/91
OREGON STATE PLANE
INTERNATIONAL FEET

772036.4254
8532497.5883

N.T.S

SKETCH



MONUMENT SET (PROCEDURES AND DESCRIPTION)

NEW ACCESSORIES FROM WHICH

RECEIVED BY

Umatilla County Surveyor
Date 2-02
Rec'd By KK
No. 02-499

LOCATION AND COMMENTS

AT INTERSECTION OF EDWARDS RD.
AND STAGE GULCH RD.

COMPASS DEC.

FIRM/AGENCY
PRIMM LAND SURVEYING
P.O. BOX 1322
HERMISTON, OREGON 97838

PARTY CHIEF
KEITH P. PRIMM

NOTES

WITNESS
BRIT L. PRIMM

SURVEYOR'S SEAL

REGISTERED
PROFESSIONAL
LAND SURVEYOR

Brit L. Primm
OREGON
JULY 13, 1999
BRIT L. PRIMM
48509

EXPIRATION DATE:12/31/02