

OREGON CORNER RESTORATION FORM

Section 5,32 Township 3N,4N
County Umatilla Date: 12/31/08

Range 29E

Corner Designation: 3N29A7

1/4 corner common to section 5, T3N, R29E
and section 32, T4N, R29E, W.M.

- Condition Report Only
- Not Found
- Remonumented
- Unrecorded
- Surveyed In
- Referenced Out

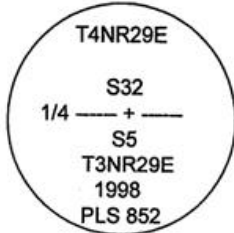
Previous Renewals / Surveys, etc.

Originally Surveyed by Gates in 1859. He set a post in a mound of earth.
 Kimbrell set an I.P. for corner in block 2 of record of private surveys, pg 263.
 In 1974 Krumbein Found a Brass cap at this location.
 In 1995 Edwards set a 5/8" Iron rod with a 2" aluminum cap.
 In 1998 Haddock set a 2 1/4" Brass cap over Kimbrells Iron pipe.
 In 2002 Primm found a 2 1/4" Brass cap at this location.

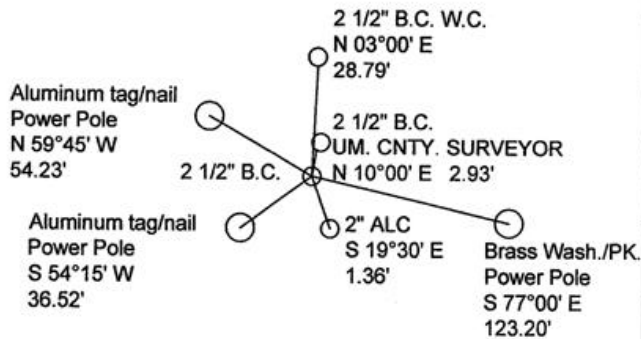
Monuments and Accessories Found: (Condition and Source)

An aluminum tag #951 and nail on a power pole lies N 59°45' W, 54.23'.
 A 2 1/2" B.C., #933, lies N 10°00' E, 2.93'.
 A 2 1/2" B.C. W.C. lies N 03°00' E, 28.79'.
 A 2" ALC #951 lies S 19°30' E, 1.36'.
 An aluminum tag #951 and nail on a power pole lies S 54°15' W, 36.52'.
 A 2 1/2" B.C. #852

Diagram



Sketch



NAD 83/91
OREGON STATE PLANE NORTH
INTERNATIONAL FEET

N771968.84
E8529874.79

LAT - 45° 46' 36.96232" N LON - 119° 12' 55.14025" W

Monument (s) Set (Procedures and Description)

None.

References Set:

A brass washer #43406 and nail on a power pole lies S 77°00' E, 123.20'.

Location and Comments

The corner is in the intersection of
Dunne St. and Ball Avenue.

Compass Declination

17° E

Surveyors Seal

REGISTERED
PROFESSIONAL
LAND SURVEYOR

Robert D. English
 OREGON
 JANUARY 11, 2005
 ROBERT DOUGLAS ENGLISH
 43406LS

RENEWAL DATE: 12/31/09

RECEIVED BY:

Date: 1-11
 Rec'd By: KS
 No. 11-008-R

Firm / Agency

Survey One, LLC.
 P.O. Box 382
 Pendleton, OR 97801
 (541) 276-2055