

# OREGON CORNER RESTORATION FORM

SECTION 31,6 TOWNSHIP 4 & 3 NORTH RANGE 29 EAST Z-3  
 COUNTY : UMATILLA DATE 01/02

CORNER DESIGNATION

1/4 CORNER

CONDITION REPORT ONLY

- NOT FOUND
- RENEWED
- UNCOVERED
- SURVEYED IN
- REFERENCED

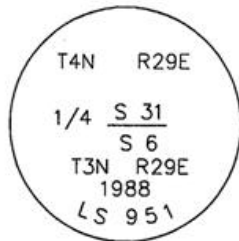
PREVIOUS RENEWALS / SURVEYS, ETC.

ORIGINALLY SURVEYED IN 1859 BY GATES UNDER CONTRACT #84. HE SET A POST IN A MOUND OF EARTH.  
 IN 1980 KRUMBEIN SET A BRASS CAP IN PLACE OF WAGON AXLE SEE SURVEY S-158.  
 IN 1988 EDWARDS SET A 2 1/2" BRASS CAP IN CONCRETE 8" DEEP WITH R x R SPIKE IN BOTTOM SEE SURVEY FOR STALEY.

MONUMENTS AND ACCESSORIES FOUND: CONDITION AND SOURCE

A 2 1/2" BRASS CAP LIES S 89°56'36" W, 63.44 FEET.  
 A R x R SPIKE LIES N 32°32'14" E, 4.72 FEET.  
 AN ALUMINUM TAG #951 ON A 14" LOCUST TREE LIES S 60°27'44" E, 49.68 FEET.  
 AN ALUMINUM TAG #951 ON A R x R TIE FENCE CORNER LIES S 43°54'56" W, 40.19 FEET.

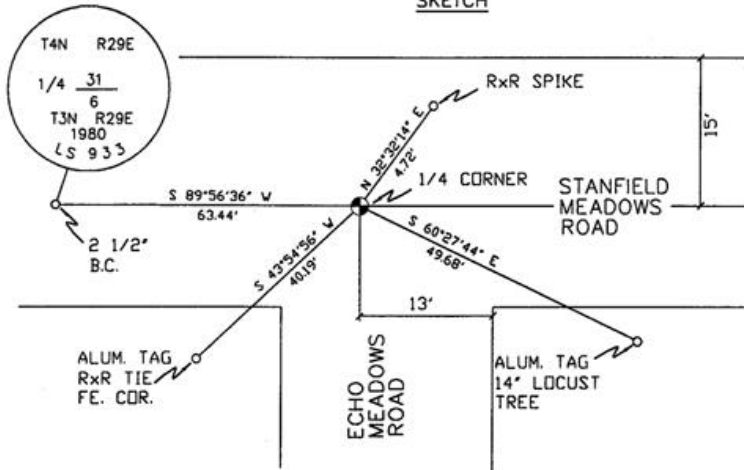
MONUMENT DETAIL



NAD 83/91  
 OREGON STATE PLANE  
 INTERNATIONAL FEET

771864.8332  
 8524609.3207

N.T.S.



SKETCH

MONUMENT SET ( PROCEDURES AND DESCRIPTION )

NEW ACCESSORIES FROM WHICH

LOCATION AND COMMENTS  
 AT INTERSECTION OF UMATILLA MEADOWS ROAD AND ECHO MEADOWS ROAD.

COMPASS DEC.

FIRM/AGENCY  
 PRIMM LAND SURVEYING  
 P.O. BOX 1322  
 HERMISTON, OREGON 97838

PARTY CHIEF  
 KEITH P. PRIMM

NOTES

WITNESS  
 BRIT L. PRIMM

RECEIVED BY

Umatilla County Surveyor

Date 2-02

Rec'd By KK

No. 02-49-9

SURVEYOR'S SEAL

REGISTERED  
 PROFESSIONAL  
 LAND SURVEYOR

*Brit L. Primm*

OREGON  
 JULY 13, 1999  
 BRIT L. PRIMM  
 48509