

CORNER RESTORATION FORM

Township 3N, 4N Range 29E, 30E Section 1,6,31,36 County UMATILLA

State OREGON Date 3/30/2023 Number Z-25

Condition Report Only

Corner Designation : SECTION CORNER: 1, 6, 31, 36

Not Found
 Renewed

Previous Renewals ORIGINAL SOURCE OF CORNER

Surveved In
 Referenced

ORIGINALLY SURVEYED IN 1859 BY N. GATES UNDER

CONTRACT 84, HE SET A POST IN MOUND OF EARTH

MONUMENT DETAIL

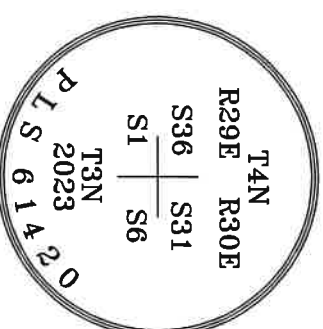
1998 EDWARDS SET A 1"X30" I.P. W/2 3/8" B.C. COUNTY

Found Set

SURVEY 98-213-C

BASIS OF BEARINGS, NAD 83/91 OREGON STATE PLANE
 COORDINATES NORTH ZONE:

NORTHING: 772526.71
 EASTING: 8553647.07



Monument & Accessories Set/Found (Procedure and Description)

AT CORNER SET 2 3/8" BRASS CAP W/15" I.P. 8" BELOW GRADE OVER A 5/8" I.R. INSIDE OF PIPE, VERIFIED WITH TIES TO EXISTING ACCESSORIES

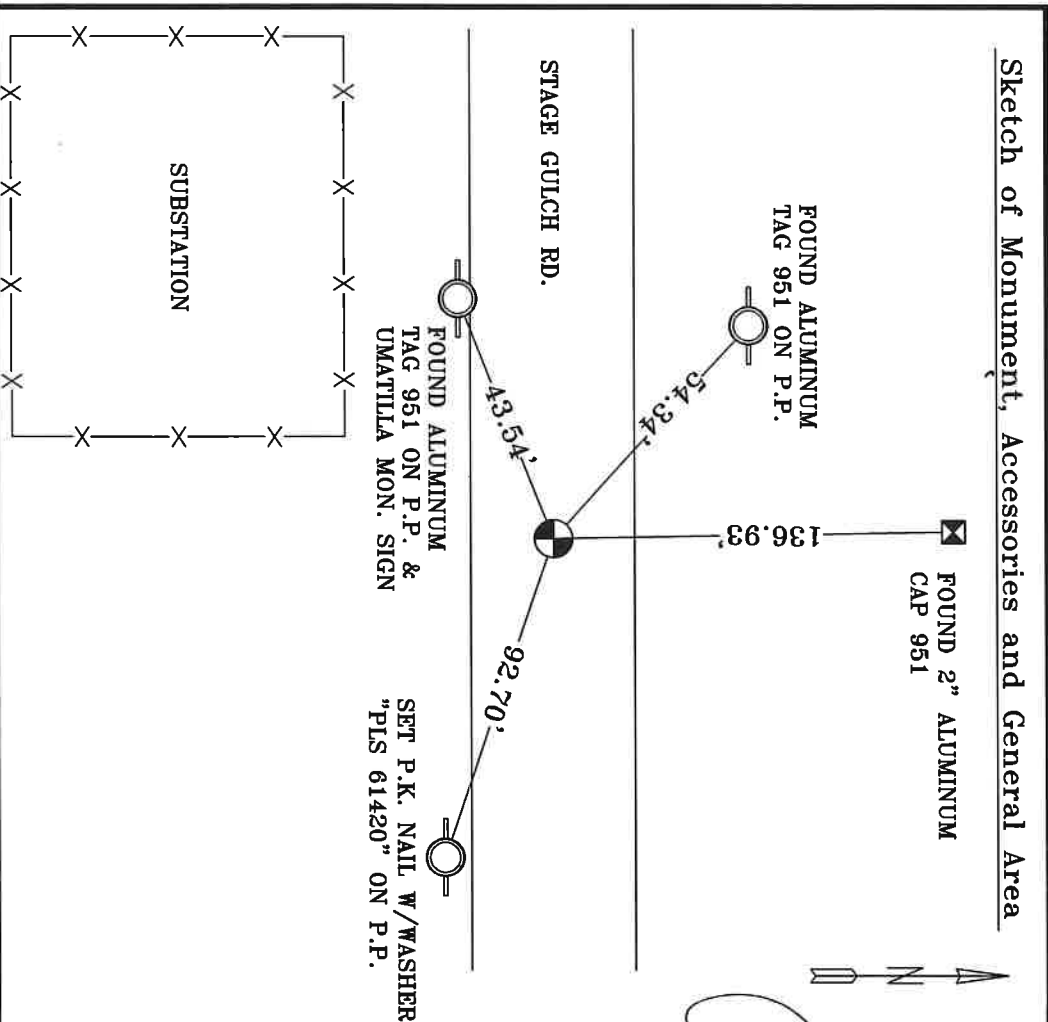
FOUND A 2" ALUMINUM CAP 951 3" BELOW GRADE N 00°56' W 136.93', CORNER FORM Z25-98-213-C

FOUND A ALUMINUM TAG 951 IN POWER POLE & UMATILLA MON. SIGN S 68°24' W 43.54', CORNER FORM Z25-98-213-C

FOUND A ALUMINUM TAG 951 IN POWER POLE N 47°44' W 54.34', CORNER FORM Z25-98-213-C

SET A P.K. NAIL W/WASHER "PLS 61420" IN P.P. S 81°08' E 92.70'

Sketch of Monument, Accessories and General Area



REGISTERED PROFESSIONAL LAND SURVEYOR

Lance Clark King

OREGON
MAY 10, 2011
LANCE CLARK KING
61420

RENEWALS: 6/30/2023

Agency: **CK3, LLC**
 945 W. ORCHARD
 HERMISTON OREGON 97838
 OFFICE: 541-567-2345
 FAX: 541-567-2305
 WEB: CK3LLC.NET
 Field Book # 0-350

COUNTY SURVEYOR RECORDING INFO

Received CT

Filed 5/4/23

Survey No. Z3-D42-C

Drawing No. _____

Index No. Z-25