

OREGON CORNER IDENTIFICATION FORM

Section 1,2

Township 3N

Range 29E

County Umatilla

Date: 12/31/08

Corner Designation: 3N29A21

Section corner common to sections 35,36, T4NR29E, 1,2, T3NR29E.

- Condition Report Only
- Not Found
- Remonumented
- Unrecorded
- Surveyed In
- Referenced Out

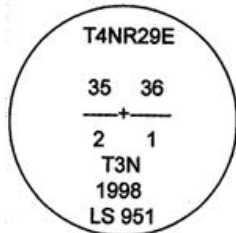
Previous Renewals / Surveys, etc.

Originally Surveyed by Gates in 1859. He set a post in a mound of earth.
 In 1998 Edwards set a 1"x30" Iron pipe with a 2 3/8" B.C. by single proportion.
 In 2001 Primm found a 2 3/8" B.C.
 In 2002 Haddock found a 2 3/8" B.C.

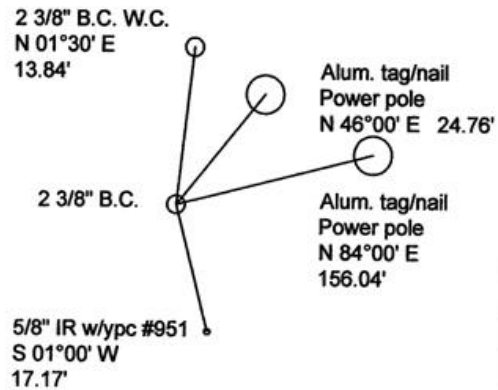
Monuments and Accessories Found: (Condition and Source)

A 2 3/8" B.C.
 A 2 3/8" B.C. W.C. lies N 01°30' E, 13.84'.
 An aluminum tag #951 and nail on a power pole lies N 46°00' E, 24.76'.
 An aluminum tag #951 and nail on a power pole lies N 84°00' E, 156.04'.
 A 5/8" IR no cap, lies S 01°00' W, 17.17'.

Diagram



Sketch



NAD 83/91
 OREGON STATE PLANE NORTH
 INTERNATIONAL FEET

N 772427.416
 E 8548342.175

LAT - 45° 46' 38.50839" N LON - 119° 08' 34.50700" W

Monument (s) Set (Procedures and Description)

None.

References Set:

Location and Comments

The corner lies approx. 2.5 miles east from the intersection of S. Ash Rd. and Stage Gulch Rd. in Stanfield.

Compass Declination
 17° E

Surveyors Seal

RECEIVED BY:

Date: 1-09
 Rec'd By: KK
 No. 09-20-R

Firm / Agency

Survey One, LLC.
 P.O. Box 382
 Pendleton, OR 97801
 (541) 276-2055

REGISTERED
 PROFESSIONAL
 LAND SURVEYOR

Robert Douglas English
 OREGON
 JANUARY II, 2005
 ROBERT DOUGLAS ENGLISH
 43406LS

RENEWAL DATE: 12/31/09