

# OREGON CORNER RESTORATION FORM

SECTION 34,35,2,3 TOWNSHIP 4&3 NORTH RANGE 29 EAST Z-17  
 COUNTY : UMATILLA DATE 11/01

CORNER DESIGNATION

SECTION CORNER

- CONDITION REPORT ONLY
- NOT FOUND
- RENEWED
- UNCOVERED
- SURVEYED IN
- REFERENCED

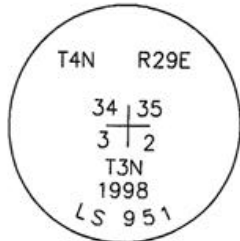
PREVIOUS RENEWALS / SURVEYS, ETC.

ORIGINALLY SURVEYED IN 1859 BY GATES UNDER CONTRACT #84. HE SET A POST IN A MOUND OF EARTH.  
 IN 1998 EDWARDS SET A 1" x 30" IRON PIPE WITH A 2 3/8" BRASS CAP BY SINGLE PROPORTION.

MONUMENTS AND ACCESSORIES FOUND: CONDITION AND SOURCE

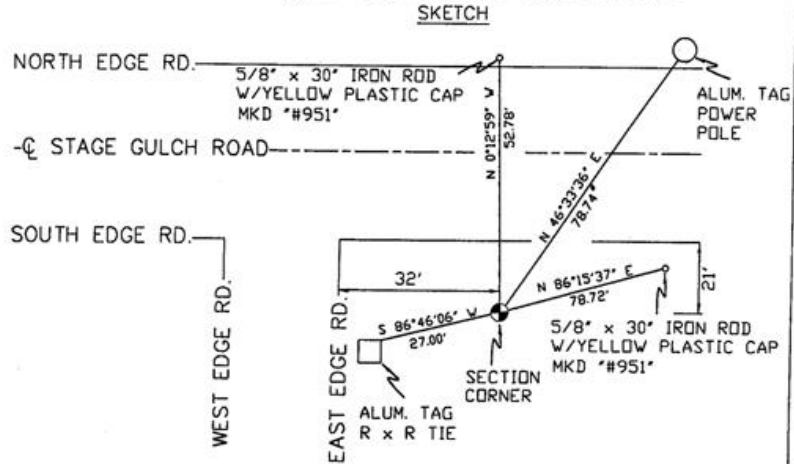
AN ALUMINUM TAG #951 ON A R x R TIE LIES S 86°46'06" W, 27.00 FEET.  
 AN ALUMINUM TAG #951 ON A POWER POLE LIES N 46°33'36" E, 78.74 FEET.  
 A 5/8" x 30" IRON ROD WITH A YELLOW PLASTIC CAP MKD "#951" LIES N 86°15'37" E, 78.72 FEET.  
 A 5/8" x 30" IRON ROD WITH A YELLOW PLASTIC CAP MKD "#951" LIES N 0°12'59" W, 52.78 FEET.

MONUMENT DETAIL



NAD 83/91  
 OREGON STATE PLANE  
 INTERNATIONAL FEET  
 772294.2630  
 8543048.2692

N.T.S.



SKETCH

MONUMENT SET ( PROCEDURES AND DESCRIPTION )

NEW ACCESSORIES FROM WHICH

**RECEIVED BY**  
 Umatilla County Surveyor  
 Date 12-01  
 Rec'd By KE  
 No. 01-213-9

LOCATION AND COMMENTS

ON THE SOUTHERLY EDGE OF OLD STAGE GULCH ROAD AND 30 FEET EAST OF DIRT ROAD.

COMPASS DEC.

FIRM/AGENCY  
 PRIMM LAND SURVEYING  
 P.O. BOX 1322  
 HERMISTON, OREGON 97838

PARTY CHIEF  
 KEITH P. PRIMM

NOTES

WITNESS  
 BRIT L. PRIMM

SURVEYOR'S SEAL

REGISTERED  
 PROFESSIONAL  
 LAND SURVEYOR

*Brit L. Primm*

OREGON  
 JULY 13, 1999  
 BRIT L. PRIMM  
 48509

EXPIRATION DATE:12/31/02