

# OREGON CORNER RESTORATION FORM

SECTION 31,32 TOWNSHIP 4 NORTH RANGE 29 EAST

X-5

COUNTY : UMATILLA DATE 01/02

CORNER DESIGNATION

1/4 CORNER

CONDITION REPORT ONLY

NOT FOUND

RENEWED

UNCOVERED

SURVEYED IN

REFERENCED

PREVIOUS RENEWALS / SURVEYS, ETC.

ORIGINALLY SURVEYED IN 1861 BY DAVENPORT UNDER CONTRACT #101. HE SET A POST IN A MOUND OF EARTH AND A CHARRED STAKE.

IN 1949 FRALEY SET A 1" IRON PIN.

IN 1980 KRUMBEIN REPLACED THE 1" IRON PIN WITH A BRASS CAP SEE SURVEY S-158 .

MONUMENTS AND ACCESSORIES FOUND: CONDITION AND SOURCE

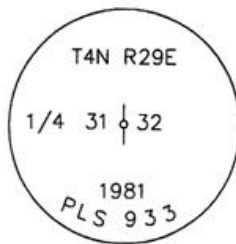
AN ALUMINUM TAG #951 ON A 48" LOCUST TREE LIES N 24°12'41" W, 98.17 FEET.

AN ALUMINUM TAG #951 ON A 40" LOCUST TREE LIES S 44°55'04" W, 14.64 FEET.

A 3/4" ID x 34" PIPE LIES N 89°28'39" E, 18.63 FEET.

A 1 3/8" ID x 32" IRON PIPE LIES S 0°31'06" E, 8.02 FEET.

MONUMENT DETAIL

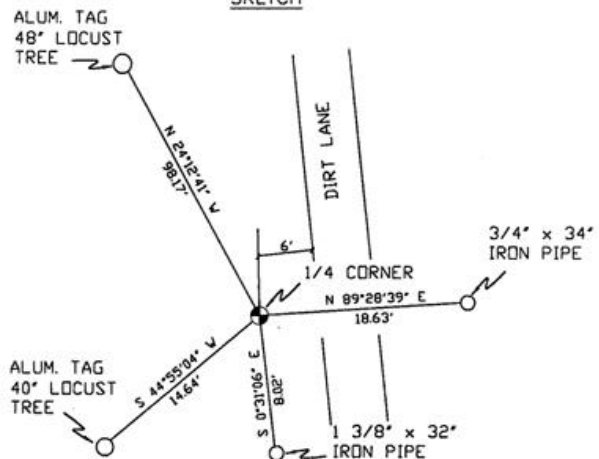


NAD 83/91  
OREGON STATE PLANE  
INTERNATIONAL FEET

774568.2000  
8527197.1590

N.T.S

SKETCH



MONUMENT SET ( PROCEDURES AND DESCRIPTION )

NEW ACCESSORIES FROM WHICH

LOCATION AND COMMENTS

FROM WEST END OF WOOD AVE.  
IN STANFIELD, GO NORTHWESTERLY  
0.1 MILES TO A DIRT LANE, THEN  
GO NORTH 0.1 MILES TO CORNER  
ALONG DIRT LANE.

COMPASS DEC.

FIRM/AGENCY

PRIMM LAND SURVEYING  
P.O. BOX 1322  
HERMISTON, OREGON 97838

PARTY CHIEF

KEITH P. PRIMM

NOTES

WITNESS

BRIT L. PRIMM

RECEIVED BY

Umatilla County Surveyor

Date 2-02

Rec'd By KR

No. 02-49-g

SURVEYOR'S SEAL

REGISTERED  
PROFESSIONAL  
LAND SURVEYOR

OREGON  
JULY 13, 1999  
BRIT L. PRIMM  
48509

EXPIRATION DATE:12/31/02