

OREGON CORNER RESTORATION FORM

SECTION 33,34 TOWNSHIP 4 NORTH RANGE 29 EAST X-13
 COUNTY : UMATILLA DATE 11/01

CORNER DESIGNATION

1/4 CORNER

- X CONDITION REPORT ONLY
 — NOT FOUND
 — RENEWED
 — UNCOVERED
 — SURVEYED IN
X REFERENCED

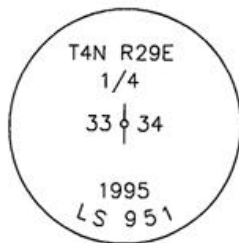
PREVIOUS RENEWALS / SURVEYS, ETC.

ORIGINALLY SURVEYED IN 1861 BY DAVENPORT UNDER CONTRACT #101. HE SET A POST IN A MOUND OF EARTH AND A CHARRED STAKE.
 IN 1995 EDWARDS SET A 1" x 30" IRON PIPE WITH A 2 3/8" BRASS CAP BY SINGLE PROPORTION.

MONUMENTS AND ACCESSORIES FOUND: CONDITION AND SOURCE

AN ALUMINUM TAG #951 IN A POWER POLE LIES N 6°21'44" E, 145.76 FEET.

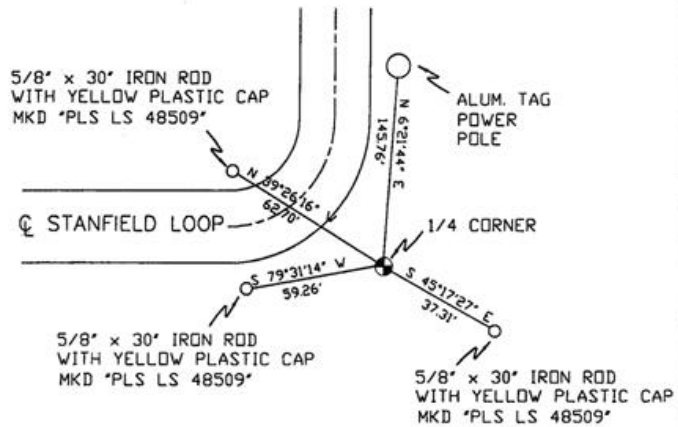
MONUMENT DETAIL



NAD 83/91
 OREGON STATE PLANE
 INTERNATIONAL FEET

774813.2932
 8537702.6019

SKETCH



MONUMENT SET (PROCEDURES AND DESCRIPTION)

NEW ACCESSORIES FROM WHICH

- A 5/8" x 30" IRON ROD WITH A YELLOW PLASTIC CAP MKD "PLS LS 48509" LIES N 39°26'16" W, 62.70 FEET.
- A 5/8" x 30" IRON ROD WITH A YELLOW PLASTIC CAP MKD "PLS LS 48509" LIES S 45°17'27" E, 37.31 FEET.
- A 5/8" x 30" IRON ROD WITH A YELLOW PLASTIC CAP MKD "PLS LS 48509" LIES S 79°31'14" W, 59.26 FEET.

LOCATION AND COMMENTS

AT CORNER OF STANFIELD LOOP ROAD NORTH AND STANFIELD LOOP ROAD WEST.

COMPASS DEC.

FIRM/AGENCY
 PRIMM LAND SURVEYING
 P.O. BOX 1322
 HERMISTON, OREGON 97838

PARTY CHIEF
 KEITH P. PRIMM

NOTES

WITNESS
 BRIT L. PRIMM

SURVEYOR'S SEAL

REGISTERED PROFESSIONAL LAND SURVEYOR

OREGON
 JULY 13, 1999
 BRIT L. PRIMM
 48509

RECEIVED BY
 Umatilla County Surveyor

Date 12-01
 Rec'd By [Signature]
 No. 01-213-9

EXPIRATION DATE: 12/31/02