

CORNER RESTORATION FORM

Township 4N Range 29E Section 27, 34 County UMATILLA

State OREGON Date 3/30/2023 Number V-15

Corner Designation : 1/4 CORNER: 27, 34

Condition Report Only

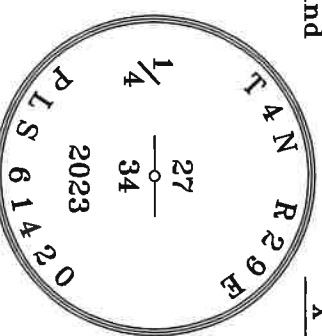
Not Found
 Renewed

Surveyed In
 Referenced

Previous Renewals	ORIGINAL SOURCE OF CORNER
ORIGINALLY SURVEYED IN 1861 BY DAVENPORT UNDER	
CONTRACT #101, HE SET A STAKE IN MOUND OF EARTH	
1998 EDWARDS SET A 1"X30" I.P. W/ 2-3/8" BRASS CAP BY	
SINGLE PROPORTION COUNTY SURVEY NO. 98-213-C &	
CORNER FORM NO. V15-98-213-C	

MONUMENT DETAIL

Found Set



BASIS OF BEARINGS, NAD 83/91 OREGON STATE PLANE
 COORDINATES NORTH ZONE:

NORTHING: 777537.87
 EASTING: 8540299.06

Monument & Accessories Set/Found (Procedure and Description)

AT CORNER SET A 2 5/8" BRASS CAP ON 5/8"X30" REBAR, AT THE LOCATION OF FOUND BENT 1 1/2" PIPE,
 CAP MISSING 2'± BELOW AC, PLACED CONCRETE COLLAR AROUND CAP, ALSO , VERIFIED CORNER LOCATION
 USING TIES TO EXISTING ACCESSORIES

FOUND A ALUMINUM TAG 951 ON POWER POLE S 09° 46' W 82.44' CORNER FORM V15-01-213-G

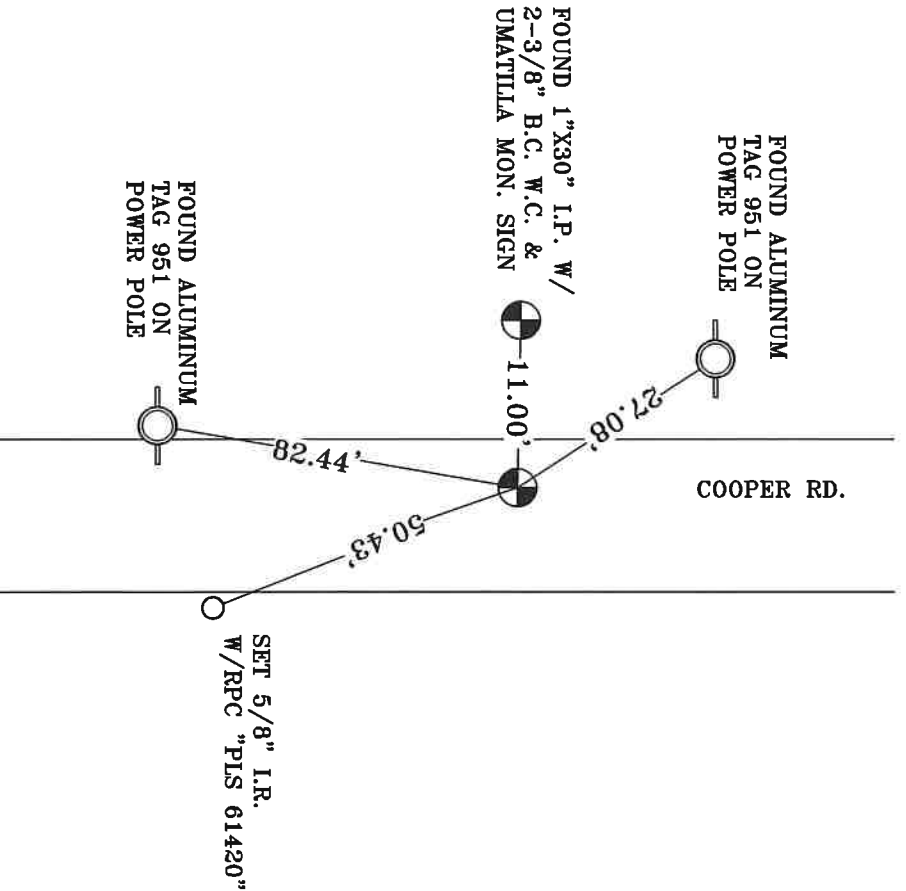
FOUND A ALUMINUM TAG 951 ON POWER POLE N 39° 46' W 27.08' CORNER FORM V15-01-213-G

FOUND A 1"X30" IRON PIPE W/ 2-3/8" BRASS CAP W.C., PLACED CONCRETE COLLAR AROUND CAP & SET A

UMATILLA MON. SIGN N 87°33' W 11.00' CORNER FORM V15-01-213-G

SET A 5/8" I.R. W/RPC "PLS 61420" 2" BELOW GRADE S 21° 9' E 50.43'

Sketch of Monument, Accessories and General Area



**REGISTERED
 PROFESSIONAL
 LAND SURVEYOR**

Lance Clark King
OREGON
 MAY 10, 2011
LANCE CLARK KING
 61420

RENEWALS: 6/30/2023

Agency: **CK3, LLC**
 945 W. ORCHARD
 HERMISTON OREGON 97838
 OFFICE: 541-567-2345
 FAX: 541-567-2305
 WEB: CK3LLC.NET
 Field Book # 0-350

**COUNTY SURVEYOR
 RECORDING INFO**

Received CT
 Filed 5/4/23
 Survey No. 23-042-C
 Drawing No. _____
 Index No. V-15