

OREGON CORNER RESTORATION FORM

SECTION 29,28 TOWNSHIP 4 NORTH RANGE 29 EAST
 COUNTY : UMATILLA DATE 01/02

T-9

CORNER DESIGNATION

1/4 CORNER

CONDITION REPORT ONLY

NOT FOUND

RENEWED

UNCOVERED

SURVEYED IN

REFERENCED

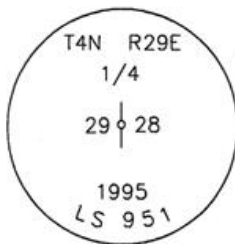
PREVIOUS RENEWALS / SURVEYS, ETC.

ORIGINALLY SURVEYED IN 1861 BY DAVENPORT UNDER CONTRACT #101. HE SET A POST IN A MOUND OF EARTH AND A CHARRED STAKE.
 IN 1995 EDWARDS SET A 1" x 30" IRON PIPE WITH A 2 3/8" BRASS CAP STAMPED AS BELOW, BY SINGLE PROPORTION.

MONUMENTS AND ACCESSORIES FOUND: CONDITION AND SOURCE

A 5/8" x 30" IRON ROD LIES N 88°54'32" E, 53.11 FEET.
 A 1/2" x 24" IRON ROD WITH A YELLOW PLASTIC CAP MKD "#951" LIES S 89°02'53" W, 18.91 FEET.
 AN ALUMINUM TAG #951 ON A POWER POLE LIES N 38°37'17" E, 31.85 FEET.
 AN ALUMINUM TAG #951 ON A POWER POLE LIES S 03°40'48" E, 268.83 FEET.

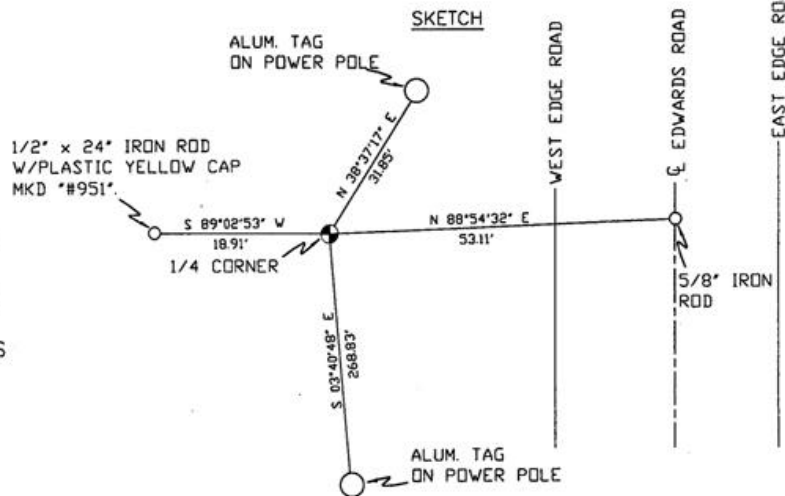
MONUMENT DETAIL



NAD 83/91
 OREGON STATE PLANE
 INTERNATIONAL FEET

779929.6010
 8532393.8906

N.T.S



MONUMENT SET (PROCEDURES AND DESCRIPTION)

NEW ACCESSORIES FROM WHICH

LOCATION AND COMMENTS

FROM INTERSECTION OF FEEDVILLE ROAD WITH EDWARDS ROAD GO SOUTH 1/2 MILE TO CORNER.

COMPASS DEC.

FIRM/AGENCY

PRIMM LAND SURVEYING
 P.O. BOX 1322
 HERMISTON, OREGON 97838

PARTY CHIEF

KEITH P. PRIMM

NOTES

WITNESS

BRIT L. PRIMM

RECEIVED BY

Umatilla County Surveyor

Date 2-02

Rec'd By KK

No. 02-49-9

SURVEYOR'S SEAL

REGISTERED
 PROFESSIONAL
 LAND SURVEYOR

Brit L. Primm
 OREGON
 JULY 13, 1999
 BRIT L. PRIMM
 48509

EXPIRATION DATE:12/31/02