

OREGON CC NE RESTORATION FC

SECTION 25 TOWNSHIP 4 NORTH RANGE 29 EAST T-25

COUNTY : UMATILLA DATE 11-2001

CORNER DESIGNATION

EAST 1/4

- CONDITION REPORT ONLY
- NOT FOUND
- RENEWED
- UNCOVERED
- SURVEYED IN
- REFERENCED

PREVIOUS RENEWALS / SURVEYS, ETC.

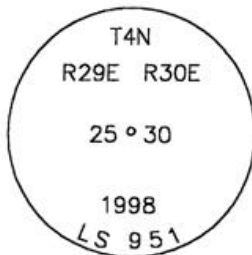
ORIGINALLY SURVEYED IN 1860 BY CAMBELL UNDER CONTRACT #95. HE SET A POST IN A MOUND OF EARTH AND A CHARRED STAKE.
 IN 1998 EDWARDS SET A 1"X30" IRON PIPE WITH A 2 3/8" BRASS CAP BY SINGLE PROPORTION.

MONUMENTS AND ACCESSORIES FOUND: CONDITION AND SOURCE

FOUND A 2 3/8" BRASS CAP ON A 1" IRON PIPE STAMPED AS BELOW.
 FROM WHICH:

- AN ALUMINUM TAG #951 SET IN A R.R. TIE FENCE POST BEARS N 10°37'37" E 84.82 FEET.
- A 5/8"X30" IRON REBAR WITH PLASTIC CAP #951 BEARS N 89°49'36" E 14.12 FEET.
- AN ALUMINUM TAG #951 ON A POWER POLE BEARS S 11°57'00" E 64.22 FEET.
- A 5/8"X30" IRON REBAR WITH PLASTIC CAP #951 BEARS N 0°19'34" W 38.17 FEET.

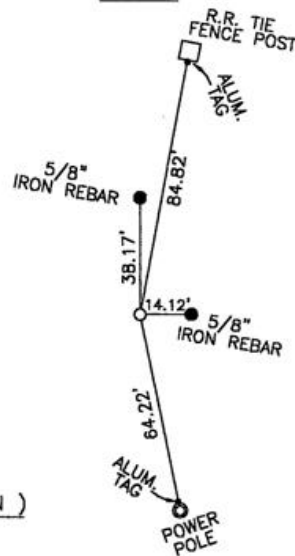
MONUMENT DETAIL



NAD 83/91
 OREGON STATE PLANE
 INTERNATIONAL FEET
 780444.6578
 8553516.6997

MONUMENT SET (PROCEDURES AND DESCRIPTION)

SKETCH



NEW ACCESSORIES FROM WHICH

LOCATION AND COMMENTS
 FROM THE INTERSECTION OF A
 LARGE POWER LINE & FEEDVILLE
 ROAD, GO SOUTH 1/2 MILE ALONG
 A POWER LINE TO CORNER.

COMPASS DEC.

FIRM/AGENCY
 EDWARDS SURVEYING
 P.O. BOX 763
 HERMISTON, OREGON 97838

PARTY CHIEF
 CURTIS FAVOREL

NOTES

WITNESS
 WALT MUNDELL

RECEIVED BY

Umatilla County Surveyor

Date 12-01

Rec'd By KE

No. 01-213-9

SURVEYOR'S SEAL

REGISTERED
 PROFESSIONAL
 LAND SURVEYOR

G. Dennis Edwards

OREGON
 JULY 16, 1971
 G. DENNIS EDWARDS
 9 5 1
 RENEWS 12/31/2001