

# OREGON CORNER RESTORATION FORM

SECTION 28,27 TOWNSHIP 4 NORTH RANGE 29 EAST T-13  
 COUNTY : UMATILLA DATE 11/01

CORNER DESIGNATION

1/4 CORNER

X CONDITION REPORT ONLY

- NOT FOUND
- RENEWED
- UNCOVERED
- SURVEYED IN
- REFERENCED

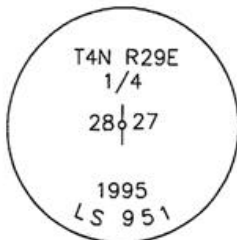
PREVIOUS RENEWALS / SURVEYS, ETC.

ORIGINALLY SURVEYED IN 1861 BY DAVENPORT UNDER CONTRACT #101. HE SET A POST IN A MOUND OF EARTH AND A CHARRED STAKE.  
 IN 1995 EDWARDS SET A 1" x 30" IRON PIPE WITH A 2 3/8" BRASS CAP BY SINGLE PROPORTION.

MONUMENTS AND ACCESSORIES FOUND: CONDITION AND SOURCE

AN ALUMINUM TAG #951 IN A LIGHT POLE LIES S 09°06'28" W, 110.77 FEET.  
 AN ALUMINUM TAG #951 IN A POWER POLE LIES S 71°43'13" W, 27.96 FEET.  
 A 5/8" x 30" IRON ROD WITH A YELLOW PLASTIC CAP MKD "#951" LIES N 01°15'31" E, 16.26 FEET.  
 A 1/2" x 24" IRON ROD WITH A YELLOW PLASTIC CAP MKD "#951" LIES N 89°52'08" E, 13.24 FEET.

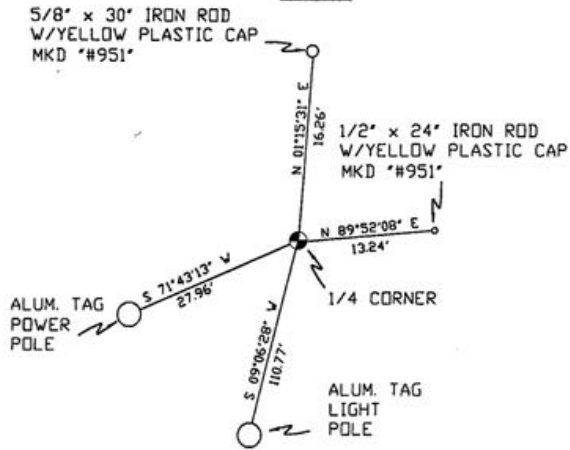
MONUMENT DETAIL



NAD 83/91  
 OREGON STATE PLANE  
 INTERNATIONAL FEET

780105.2519  
 8537613.3688

SKETCH



MONUMENT SET ( PROCEDURES AND DESCRIPTION )

NEW ACCESSORIES FROM WHICH

RECEIVED BY  
 Umatilla County Surveyor  
 Date 12-01  
 Rec'd By KE  
 No. DI-213-9

LOCATION AND COMMENTS

FROM INTERSECTION OF EDWARDS ROAD AND FEEDVILLE ROAD GO EAST 1 MILE ON FEEDVILLE AND SOUTH 1/2 MILE TO COR.

COMPASS DEC.

FIRM/AGENCY  
 PRIMM LAND SURVEYING  
 P.O. BOX 1322  
 HERMISTON, OREGON 97838

PARTY CHIEF  
 KEITH P. PRIMM

NOTES

WITNESS  
 BRIT L. PRIMM

SURVEYOR'S SEAL

REGISTERED  
 PROFESSIONAL  
 LAND SURVEYOR

*Brit L. Primm*  
 OREGON  
 JULY 13, 1999  
 BRIT L. PRIMM  
 48509

EXPIRATION DATE:12/31/02