

OREGON CORNER RESTORATION FORM

SECTION 29 TOWNSHIP 4 NORTH RANGE 29 EAST R-9

COUNTY : UMATILLA DATE 01-2002

CORNER DESIGNATION

NORTHEAST CORNER

- CONDITION REPORT ONLY
- NOT FOUND
- RENEWED
- UNCOVERED
- SURVEYED IN
- REFERENCED

PREVIOUS RENEWALS / SURVEYS, ETC.

ORIGINALLY SURVEYED BY DAVENPORT IN 1861 #101. HE SET A POST IN MOUND WITH CHARRED STAKE.

SOMEONE (POSSIBLY W. HARRIS CO.) SET BRASS CAP & BRASS CAP WITNESS COR. 1975

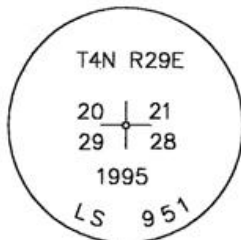
BY PROPORTION E-W AND BY JUDGMENT CALL N-S I SET A 1" X 30" PIPE WITH A 2 3/8" B.C. STAMPED AS BELOW 1" BELOW THE SURFACE. SEE MY 1994-1 COUNTY PUBLIC MONUMENTATION SURVEY

MONUMENTS AND ACCESSORIES FOUND: CONDITION AND SOURCE

FOUND 2 3/8" B.C. FROM WHICH:

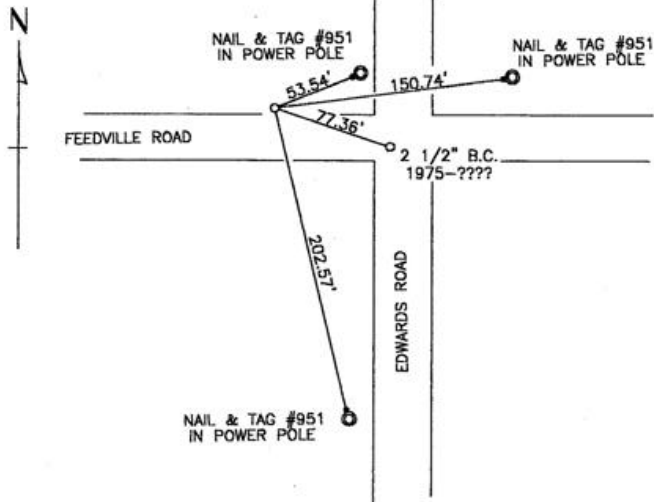
FOUND 2 1/2" B.C. STAMPED 1975 BEARS S 71°29'57" E 77.36 FEET

MONUMENT DETAIL



NAD 83/91
OREGON STATE PLANE
INTERNATIONAL FEET
782568.0268
8532350.8789

SKETCH



MONUMENT SET (PROCEDURES AND DESCRIPTION)

NA

NEW ACCESSORIES FROM WHICH

AN ALUMINUM TAG #951 IN POWER POLE BEARS N 68°20'08" E 53.54 FEET
AN ALUMINUM TAG #951 IN POWER POLE BEARS N 82°44'32" E 150.74 FEET
AN ALUMINUM TAG #951 IN POWER POLE BEARS S 13°35'22" E 202.57 FEET

RECEIVED BY

Umatilla County Surveyor

Date 2-02

Rec'd By KF

No. 02-48-9

LOCATION AND COMMENTS

INTERSECTION OF EDWARDS ROAD & FEEDVILLE ROAD

COMPASS DEC.

FIRM/AGENCY
EDWARDS SURVEYING
P.O. BOX 763
HERMISTON, OREGON 97838

PARTY CHIEF
CURTIS FAVOREL

NOTES

WITNESS
WALT MUNDELL

SURVEYOR'S SEAL

REGISTERED
PROFESSIONAL
LAND SURVEYOR

G. Dennis Edwards

OREGON
JULY 16, 1971
G. DENNIS EDWARDS
9 5 1
RENEWS 12/31/2003