

CORNER RESTORATION FORM

Township 4N Range 29E Section 19, 30 County UMATILLA

State OREGON Date 3/30/2023 Number R-3

Condition Report Only

Corner Designation : 1/4 CORNER: 19, 30

Previous Renewals ORIGINAL SOURCE OF CORNER

Not Found
 Renewed
 Surveyed In
 Referenced

ORIGINALLY SURVEYED IN 1861 BY DAVENPORT UNDER

CONTRACT #101, HE SET A STAKE IN MOUND OF EARTH

MONUMENT DETAIL

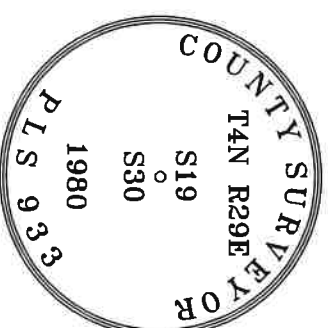
1980 KRUMBEIN SET A 2 1/2" BRASS CAP AT LOC. OF

Found Set

"WAGON AXLE" COUNTY SURVEY NO. S-158-C

BASIS OF BEARINGS, NAD 83/91 OREGON STATE PLANE

NORTHING: 782413.95
 EASTING: 8524412.19



Monument & Accessories Set/Found (Procedure and Description)

AT CORNER FOUND A 2 1/2" BRASS CAP 4.5" BELOW ASPHALT SLIGHTLY BENT NORTHEAST, COUNTY SURVEY NO. S-158-C

FOUND A 1"X30" I.P W/2 3/8" B.C. W.C. S 01°10' E 29.94', CORNER FORM NO. R3-95-60-B

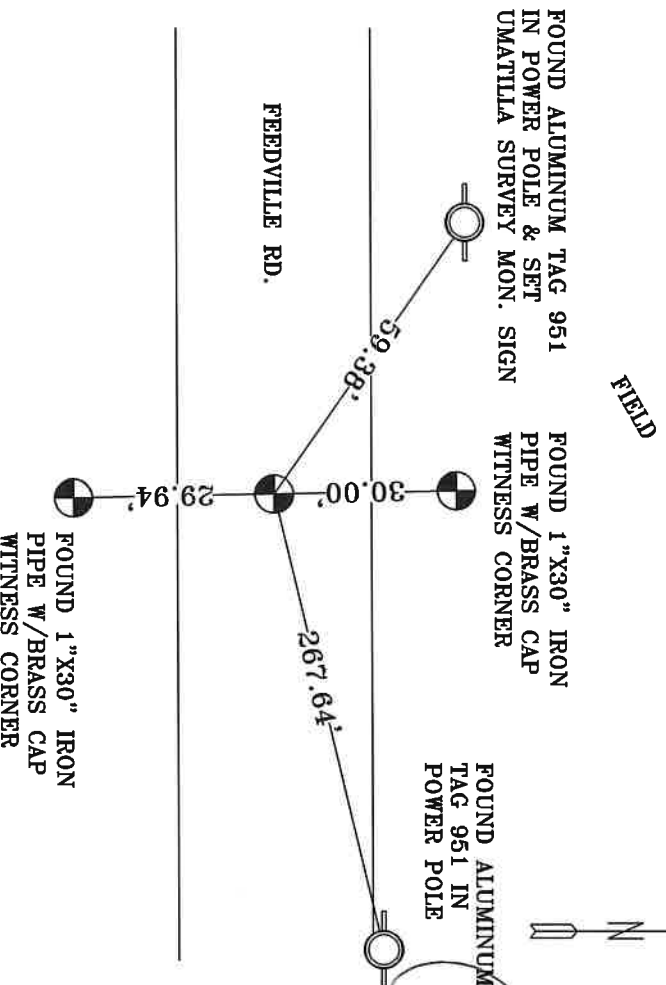
FOUND A 1"X30" I.P W/2 3/8" B.C. W.C. N 00°59' W 30.00', CORNER FORM NO. R3-95-60-B

FOUND A ALUMINUM TAG 951 IN P.P. N 81°35' E 267.64', CORNER FORM NO. R3-02-48-G

FOUND A ALUMINUM TAG 951 IN P.P. & SET A UMATILLA MON. SIGN N 55°01' W 59.38', CORNER FORM NO.

02-48-G

Sketch of Monument, Accessories and General Area



**REGISTERED
PROFESSIONAL
LAND SURVEYOR**

[Signature]
OREGON
MAY 10, 2011
LANCE CLARK KING
61420

RENEWALS: 6/30/2023

Agency: **CK3, LLC**
 945 W. ORCHARD
 HERMISTON OREGON 97838
 OFFICE: 541-567-2345
 FAX: 541-567-2305
 WEB: CK3ILC.NET
 Field Book# 0-350

**COUNTY SURVEYOR
RECORDING INFO**

Received CT
 Filed 5/4/23
 Survey No. 23-042-C
 Drawing No. _____
 Index No. R-3