

# OREGON CORNER RESTORATION FORM

SECTION 25 TOWNSHIP 4 NORTH RANGE 29 EAST R-25

COUNTY : UMATILLA DATE 8-98

CORNER DESIGNATION

NE CORNER

CONDITION REPORT ONLY  
 NOT FOUND  
 RENEWED  
 UNCOVERED  
 SURVEYED IN  
 REFERENCED

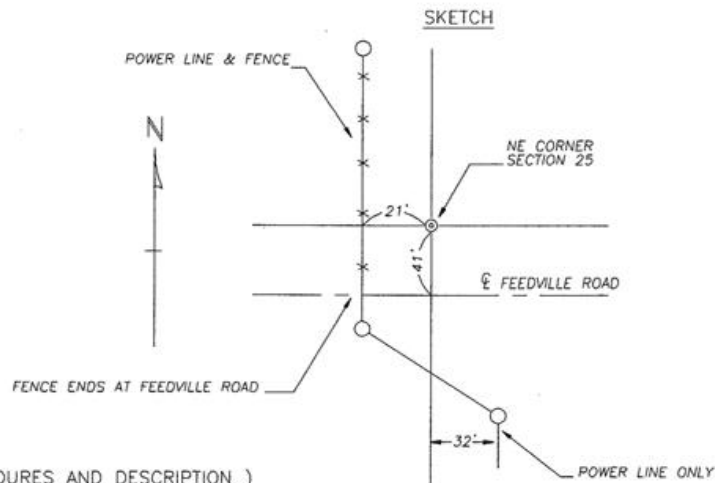
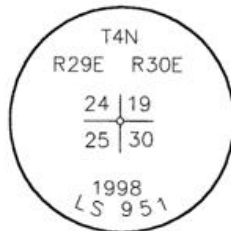
PREVIOUS RENEWALS / SURVEYS, ETC.

ORIGINALLY SURVEYED IN 1860 BY CABELL UNDER CONTRACT #95. HE SET A POST IN A MOUND OF EARTH AND A CHARRED STAKE.

MONUMENTS AND ACCESSORIES FOUND: CONDITION AND SOURCE

FOUND NOTHING

MONUMENT DETAIL



MONUMENT SET ( PROCEDURES AND DESCRIPTION )

BY SINGLE PROPORTION, I SET A 1" X 30" IRON PIPE WITH A 2 3/8" BRASS CAP STAMPED AS ABOVE. 4" BELOW THE SURFACE OF A DIRT ROAD.

NEW ACCESSORIES FROM WHICH

AN ALUMINUM TAG #951 IN POWER POLE LIES S13°.28' W 61.69 FT.  
 AN ALUMINUM TAG #951 IN BRACE POLE LIES S 20°15'.30" W 63.36 FT.  
 AN ALUMINUM TAG #951 IN POWER POLE LIES S 57°.30'00" W 24.72 FEET  
 A 5/8 REBAR WITH PLASTIC CAP#951 LIES S 89°.56'20" W 20.79 FEET.

LOCATION AND COMMENTS

AT THE INTERSECTION OF FEEDVILLE ROAD AND A LARGE POWER LINE

COMPASS DEC.

FIRM/AGENCY  
 EDWARDS SURVEYING  
 P.O. BOX 763  
 HERMISTON, OREGON 97838  
 97838

PARTY CHIEF  
 D. EDWARDS

NOTES

WITNESS  
 RICK SMITH

SURVEYOR'S SEAL

REGISTERED PROFESSIONAL LAND SURVEYOR

*G. Dennis Edwards*

OREGON  
 JULY 16, 1971  
 G. DENNIS EDWARDS  
 951  
 RENEWS 12/31/99

RECEIVED BY

Umatilla County Surveyor

Date 10-98

Rec'd By KK

No. 98-213-C