

# OREGON CORNER RESTORATION FORM

SECTION 19    TOWNSHIP 4 NORTH    RANGE 29 EAST    P-5  
 COUNTY : UMATILLA    DATE 01-2002

CORNER DESIGNATION

E. 1/4 CORNER

- CONDITION REPORT ONLY
- NOT FOUND
- RENEWED
- UNCOVERED
- SURVEYED IN
- REFERENCED

PREVIOUS RENEWALS / SURVEYS, ETC.

ORIGINALLY SURVEYOR WAS DAVENPORT 1861 #101. HE SET POST, DROVE CHARRED STAKE, MADE PITS AND MOUNDS.  
 BY SINGLE PROPORTION I SET A 1" X 30" IRON PIPE WITH FLARED BOTTOM AND A 2 3/8" BRASS CAP STAMPED AS BELOW, 0.3 FEET BELOW SURFACE OF A GRAVELED ROAD.

MONUMENTS AND ACCESSORIES FOUND: CONDITION AND SOURCE

FOUND A 2 3/8" BRASS CAP 0.3 FT. BELOW THE SURFACE OF GRAVELED ROAD, STAMPED AS BELOW. FROM WHICH:

A 5/8" X 30" REBAR WITH ALUMINUM TAG #951 BEARS S 89°53'11" W 29.96 FEET  
 ALUMINUM TAG #951 IN CEDAR POST BEARS S 48°32'34" E 26.83 FEET

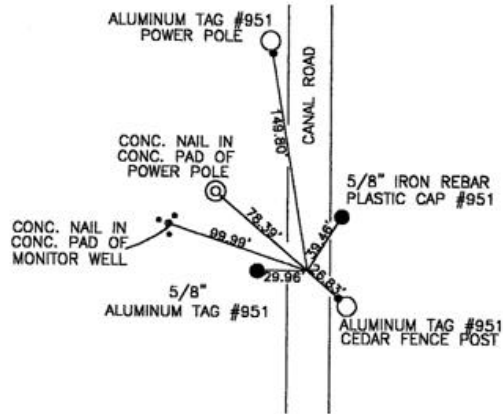
MONUMENT DETAIL



NAD 83/91  
 OREGON STATE PLANE  
 INTERNATIONAL FEET  
 785105.1380  
 8527013.8098



SKETCH



MONUMENT SET ( PROCEDURES AND DESCRIPTION )

NA

NEW ACCESSORIES FROM WHICH

A CONCRETE NAIL AT THE BASE OF CONCRETE PAD OF MONITOR WELL BEARS N 71°42'18" W 99.99 FEET  
 A CONCRETE NAIL AT THE BASE OF CONCRETE PAD OF POWER POLE BEARS N 49°38'35" W 78.39 FEET  
 AN ALUMINUM TAG #951 IN A POWER POLE BEARS N 9°21'19" E 149.80 FEET  
 SET 5/8" X 30" REBAR WITH PLASTIC CAP #951 BEARS N 32°42'54" E 39.46 FEET

LOCATION AND COMMENTS

FROM INTERSECTION OF FEEDVILLE AND CANAL ROADS, GO NORTH ON CANAL ROAD 0.5 MILES TO CORNER.

COMPASS DEC.

FIRM/AGENCY  
 EDWARDS SURVEYING  
 P.O. BOX 763  
 HERMISTON, OREGON 97838

PARTY CHIEF  
 CURTIS FAVOREL

NOTES

WITNESS  
 WALT MUNDELL

SURVEYOR'S SEAL

REGISTERED  
 PROFESSIONAL  
 LAND SURVEYOR

*G. Dennis Edwards*

OREGON  
 JULY 16, 1971  
 G. DENNIS EDWARDS  
 9 5 1

RECEIVED BY \_\_\_\_\_ RENEWS 12/31/2003

Umatilla County Surveyor

Date 2-02  
 Rec'd By KK  
 No. 02-48-g