

CORNER RESTORATION FORM

Township 4N Range 29E, 30E Section 19, 24 County UMATILLA

State OREGON Date 3/30/2023 Number P-25

Corner Designation : 1/4 CORNER: 19, 24

Condition Report Only

Not Found

Renewed

Surveyed In

Referenced

Previous Renewals ORIGINAL SOURCE OF CORNER

ORIGINALLY SURVEYED IN 1860 BY CAMPBELL UNDER

CONTRACT #95, HE SET A STAKE IN MOUND OF EARTH

1998 EDWARDS SET A 1"X30" I.P. W/ 2-3/8" BRASS CAP BY

SINGLE PROPORTION COUNTY SURVEY NO. 98-213-C &

CORNER FORM NO. P25-98-213-C

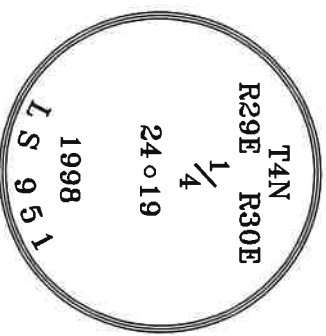
MONUMENT DETAIL

Found Set

BASIS OF BEARINGS, NAD 83/91 OREGON STATE PLANE
COORDINATES NORTH ZONE:

NORTHING: 785723.51

EASTING: 8553430.05



Monument & Accessories Set/Found (Procedure and Description)

AT CORNER FOUND A 2 3/8" BRASS CAP 4" DEEP, COUNTY SURVEY NO. 98-213-C & CORNER FORM P25-98-213-C

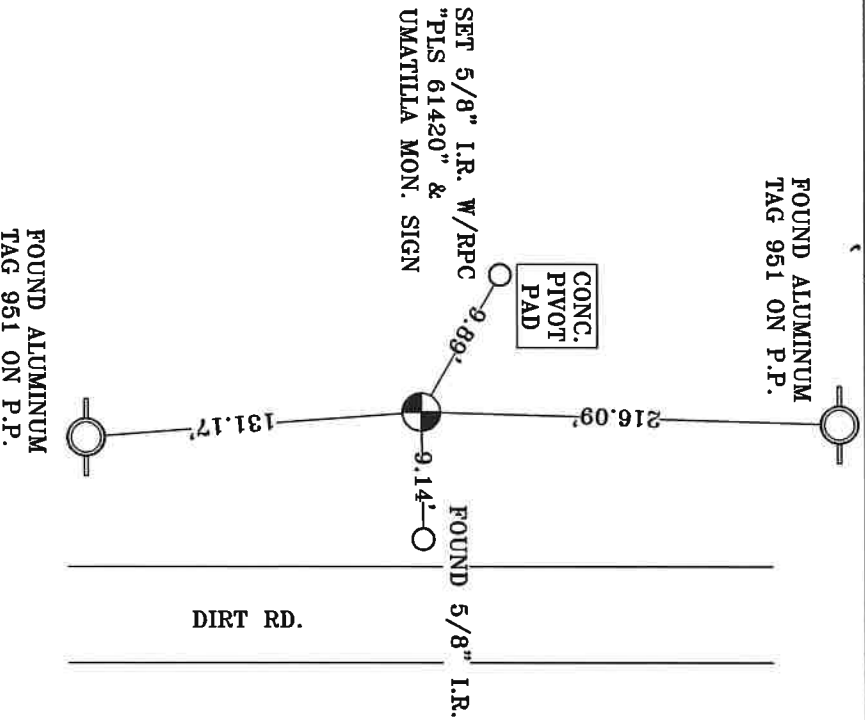
FOUND A ALUMINUM TAG 951 ON P.P. N 01°43' E 216.09', CORNER FORM NO. P25-98-213-C

FOUND A ALUMINUM TAG 951 ON P.P. S 04°16' E 131.17', CORNER FORM NO. P25-98-213-C

FOUND A 5/8" I.R. 8" BELOW GRADE N 89°13' E 9.14', CORNER FORM NO. P25-98-213-C

SET A 5/8" I.R. W/RPC "PLS 61420" & UMATILLA MON. SIGN N 57°31' W 9.89'

Sketch of Monument, Accessories and General Area



**REGISTERED
PROFESSIONAL
LAND SURVEYOR**

Lance Clark King
**OREGON
MAY 10, 2011
LANCE CLARK KING
61420**

RENEWALS: 6/30/2023

Agency: **CK3, LLC**
945 W. ORCHARD
HERMISTON OREGON 97838
OFFICE: 541-567-2345
FAX: 541-567-2305
WEB: CK3LLC.NET
Field Book # 0-350

COUNTY SURVEYOR
RECORDING INFO

Received CT

Filed 5/4/23

Survey No. 23-042-C

Drawing No. _____

Index No. P-25