

OREGON CORNER RESTORATION FORM

SECTION 21,22 TOWNSHIP 4 NORTH RANGE 29 EAST

P-13

COUNTY : UMATILLA DATE 11/01

CORNER DESIGNATION

1/4 CORNER

- CONDITION REPORT ONLY
- NOT FOUND
- RENEWED
- UNCOVERED
- SURVEYED IN
- REFERENCED

PREVIOUS RENEWALS / SURVEYS, ETC.

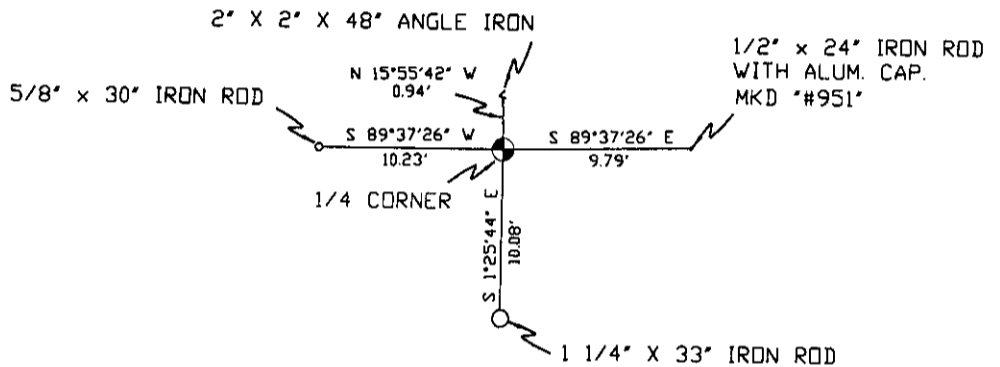
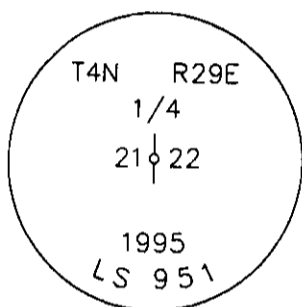
ORIGINALLY SURVEYED IN 1861 BY DAVENPORT UNDER CONTRACT #101. HE SET A POST IN A MOUND OF EARTH AND A CHARRED STAKE.
IN 1995 EDWARDS SET A 1" x 30" IRON PIPE WITH A 2 3/8" BRASS CAP BY SINGLE PROPORTION.

MONUMENTS AND ACCESSORIES FOUND: CONDITION AND SOURCE

- 5/8" X 30" IRON ROD LIES S 89°37'26" W, 10.23 FEET.
- 2" x 2" x 48" ANGLE IRON LIES N 15°55'42" W, 0.94 FEET.
- 1/2" X 24" IRON ROD WITH ALUM. CAP #951 LIES S 89°37'26" E, 9.79 FEET.
- 1 1/4" X 33" IRON ROD LIES S 1°25'44" W, 10.08 FEET.

MONUMENT DETAIL

SKETCH



NAD 83/91
OREGON STATE PLANE
INTERNATIONAL FEET

785395.5365
8537538.6105

MONUMENT SET (PROCEDURES AND DESCRIPTION)

NEW ACCESSORIES FROM WHICH

RECEIVED BY
Umatilla County Surveyor
Date 12-01
Rec'd By KK
No. 01-213-9

LOCATION AND COMMENTS

FROM INTERSECTION OF EDWARDS ROAD AND FEEDVILLE ROAD GO EAST 1 MILE TO FENCE COR. THEN GO NORTH 1/2 MILE ACROSS FIELDS TO COR.

COMPASS DEC.

FIRM/AGENCY
PRIMM LAND SURVEYING
P.O. BOX 1322
HERMISTON, OREGON 97838

PARTY CHIEF
KEITH P. PRIMM

NOTES

WITNESS
BRIT L. PRIMM

SURVEYOR'S SEAL

REGISTERED
PROFESSIONAL
LAND SURVEYOR

BAU 2
OREGON
JULY 13, 1999
BRIT L. PRIMM
48509

EXPIRATION DATE: 12/31/02