

OREGON CORNER RESTORATION FORM

SECTION 17.20 TOWNSHIP 4 NORTH RANGE 29 EAST

N-7

COUNTY : UMATILLA DATE MAY/20

CORNER DESIGNATION

1/4 CORNER

- CONDITION REPORT ONLY
- NOT FOUND
- RENEWED
- UNCOVERED
- SURVEYED IN
- REFERENCED

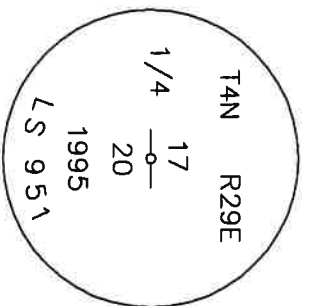
PREVIOUS RENEWALS / SURVEYS, ETC.

ORIGINALLY SURVEYED IN 1861 BY DAVENPORT UNDER CONTRACT #101. HE SET A POST IN A MOUND OF EARTH AND A CHARRED STAKE. IN 1995 EDWARDS SET A 2 3/8" BC STAMPED AS BELOW,

MONUMENTS AND ACCESSORIES FOUND: CONDITION AND SOURCE

AN ALUMINUM TAG #951 ON A POWER POLE LIES S 77°29'27" W, 610.04 FEET.
 AN ALUMINUM TAG #951 ON A POWER POLE LIES S 15°31'39" E, 484.98 FEET.
 A 5/8" IRON ROD WITH A PLASTIC CAP #951 LIES N 0°06'22" W, 9.98 FEET.
 A 2 3/8" BC STAMPED AS BELOW.

MONUMENT DETAIL



NAD 83/91
 OREGON STATE PLANE
 INTERNATIONAL FEET

787810.20
 8529615.27

MONUMENT SET (PROCEDURES AND DESCRIPTION)

NEW ACCESSORIES FROM WHICH

A 5/8" x 30" IRON ROD WITH A YELLOW PLASTIC CAP MKD "PLS LS 48490" LIES S 87°31'48" E, 82.63 FEET.

LOCATION AND COMMENTS

FROM INTERSECTION OF HIGHLAND AVENUE AND EDWARDS RD. GO SOUTH 1 MILE THEN WEST ALONG FARM ROAD 0.5 MILES TO CORNER.

COMPASS DEC.

SURVEYOR'S SEAL

FIRM/AGENCY
 PRIMM LAND SURVEYING
 P.O. BOX 1322
 HERMISTON, OREGON 97838

REGISTERED
 PROFESSIONAL
 LAND SURVEYOR

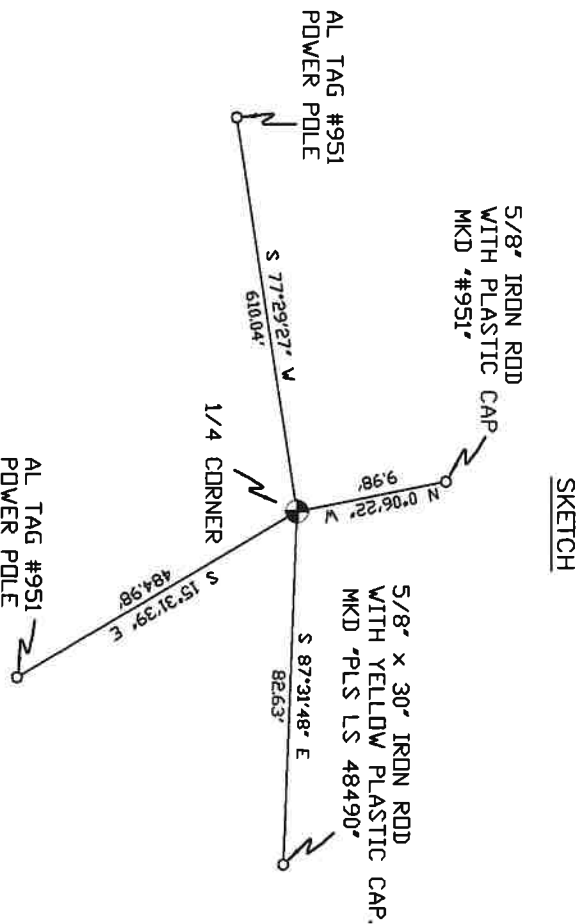
PARTY CHIEF
 BRIT L. PRIMM

NOTES

OREGON
 JULY 12, 2005
 KEITH P. PRIMM
 48490

WITNESS
 KEITH P. PRIMM

EXPIRATION DATE: 12/31/20



~~724A~~

21-004-c

d1 DEC 20