

# OREGON CORNER RESTORATION FORM

SECTION 13.24 TOWNSHIP 4 NORTH RANGE 29 EAST

N-23

COUNTY : UMATILLA DATE MAY/20

CORNER DESIGNATION

1/4 CORNER

- X CONDITION REPORT ONLY  
 NOT FOUND  
 RENEWED  
 UNCOVERED  
 SURVEYED IN  
 REFERENCED

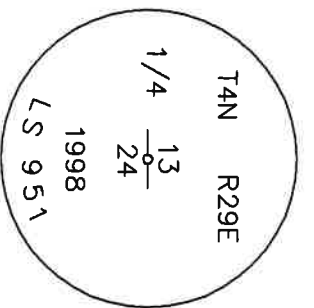
PREVIOUS RENEWALS / SURVEYS, ETC.

ORIGINALLY SURVEYED IN 1861 BY DAVENPORT UNDER CONTRACT #101. HE SET A POST IN A MOUND OF EARTH AND A CHARRED STAKE.  
 IN 1998 EDWARDS SET A 1" x 30" IRON PIPE WITH A 2 3/8" BC BY SINGLE PROPORTION.

MONUMENTS AND ACCESSORIES FOUND: CONDITION AND SOURCE

- A 5/8" IRON ROD WITH A YELLOW PLASTIC CAP MKD "#951" LIES N 5°17'47" W, 229.84 FEET.
- A 5/8" IRON ROD WITH A YELLOW PLASTIC CAP MKD "#951" LIES N 59°45'04" W, 178.57 FEET.
- A 5/8" IRON ROD WITH A YELLOW PLASTIC CAP MKD "#951" LIES S 86°42'14" W, 315.62 FEET.
- A SCRIBED X IN CORNER OF A CONC. PAD LIES S 43°37'18" E, 538.39 FEET.
- A 17°19'00" E, 140.66 FEET
- A 2 3/8" BC STAMPED AS BELOW.

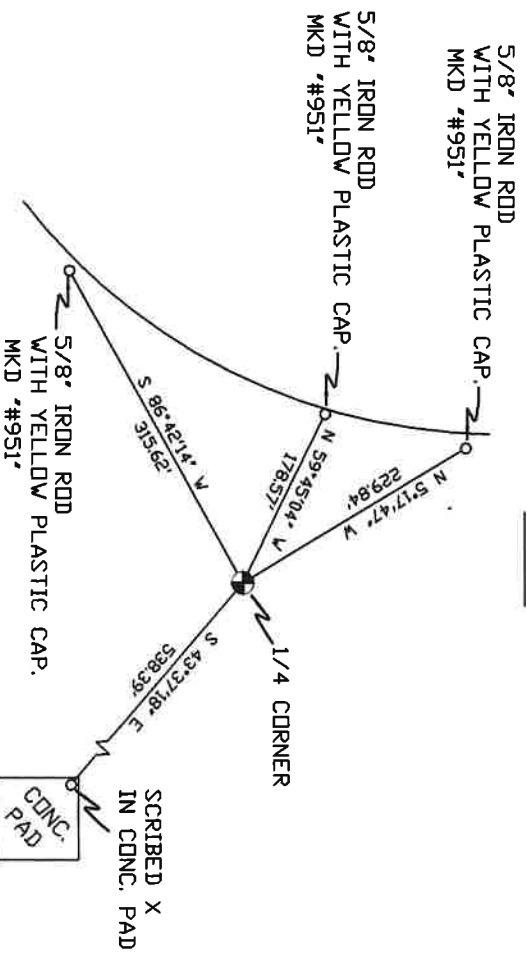
MONUMENT DETAIL



NAD 83/91  
 OREGON STATE PLANE  
 INTERNATIONAL FEET  
 788317.13  
 8550747.88

MONUMENT SET ( PROCEDURES AND DESCRIPTION )

SKETCH



NEW ACCESSORIES FROM WHICH

LOCATION AND COMMENTS

FROM INTERSECTION OF LOOP ROAD  
 AND KOSMOS ROAD GO EAST ON  
 KOSMOS ROAD 1 MILE THEN GO  
 SOUTH ACROSS FIELD 1 MILE  
 TO CORNER.

COMPASS DEC.

FIRM/AGENCY  
 PRIMM LAND SURVEYING  
 P.O. BOX 1322  
 HERMISTON, OREGON 97838

SURVEYOR'S SEAL

REGISTERED  
 PROFESSIONAL  
 LAND SURVEYOR

PARTY CHIEF  
 PAUL P. PILCH

NOTES

OREGON  
 JULY 12, 2005  
 KEITH P. PRIMM  
 48490

WITNESS  
 KEITH P. PRIMM

EXPIRATION DATE: 12/31/20

21-004-C

Φ 1 DEC 20