

OREGON CORNER RESTORATION FORM

SECTION 13,24 TOWNSHIP 4 NORTH RANGE 29 EAST N-23
 COUNTY : UMATILLA DATE 11/01

CORNER DESIGNATION

1/4 CORNER

- CONDITION REPORT ONLY
- NOT FOUND
- RENEWED
- UNCOVERED
- SURVEYED IN
- REFERENCED

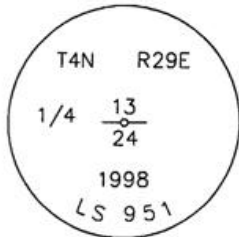
PREVIOUS RENEWALS / SURVEYS, ETC.

ORIGINALLY SURVEYED IN 1861 BY DAVENPORT UNDER CONTRACT #101. HE SET A POST IN A MOUND OF EARTH AND A CHARRED STAKE. IN 1998 EDWARDS SET A 1" x 30" IRON PIPE WITH A 2 3/8" BRASS CAP BY SINGLE PROPORTION.

MONUMENTS AND ACCESSORIES FOUND: CONDITION AND SOURCE

A 5/8" x 24" IRON ROD WITH A YELLOW PLASTIC CAP MKD "#951" LIES N 89°57'11" E, 169.99 FEET.
 A 5/8" x 30" IRON ROD WITH A YELLOW PLASTIC CAP MKD "#951" LIES N 89°52'27" E, 19.00 FEET.
 A 5/8" x 30" IRON ROD WITH A YELLOW PLASTIC CAP MKD "#951" LIES S 89°53'05" W, 23.01 FEET.
 A 3/4" IRON BOLT IN THE NORTH WEST CORNER OF AN 11' X 11' CONC. PAD LIES S 17°19'00" E, 140.66 FEET

MONUMENT DETAIL



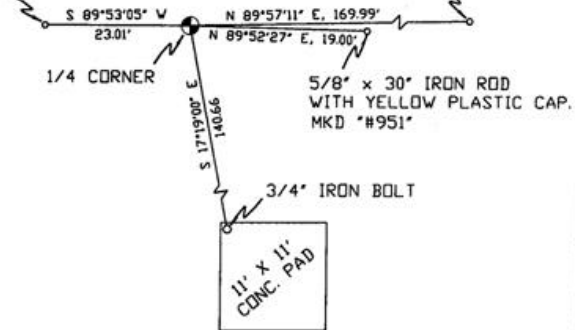
NAD 83/91
 OREGON STATE PLANE
 INTERNATIONAL FEET

788317.0407
 8550747.6776



5/8" x 30" IRON ROD WITH YELLOW PLASTIC CAP. MKD "#951"

5/8" x 24" IRON ROD WITH YELLOW PLASTIC CAP. MKD "#951"



SKETCH

MONUMENT SET (PROCEDURES AND DESCRIPTION)

NEW ACCESSORIES FROM WHICH

LOCATION AND COMMENTS

FROM INTERSECTION OF FEEDVILLE ROAD WITH A LARGE POWER LINE GO NORTH 1 MILE THEN GO EAST ACROSS FIELD 1/2 MILE TO CORNER.

COMPASS DEC.

FIRM/AGENCY
 PRIMM LAND SURVEYING
 P.O. BOX 1322
 HERMISTON, OREGON 97838

PARTY CHIEF
 KEITH P. PRIMM

NOTES

WITNESS
 BRIT L. PRIMM

RECEIVED BY

Umatilla County Surveyor

Date 12-01

Rec'd By KK

No. 01-213-9

SURVEYOR'S SEAL

REGISTERED PROFESSIONAL LAND SURVEYOR

Brit L. Primm

OREGON
 JULY 13, 1999
 BRIT L. PRIMM
 48509

EXPIRATION DATE:12/31/02