

OREGON CORNER RESTORATION FORM

SECTION 14.23 TOWNSHIP 4 NORTH RANGE 29 EAST

N-19

COUNTY : UMATILLA DATE MAY/20

CORNER DESIGNATION

CONDITION REPORT ONLY

1/4 CORNER

NOT FOUND
 RENEWED
 UNCOVERED
 SURVEYED IN
 REFERENCED

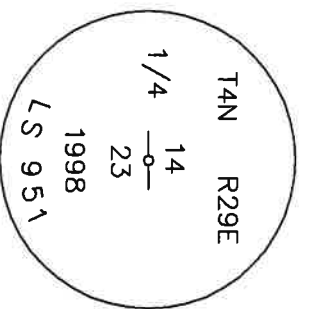
PREVIOUS RENEWALS / SURVEYS, ETC.

ORIGINALLY SURVEYED IN 1861 BY DAVENPORT UNDER CONTRACT #101. HE SET A POST IN A MOUND OF EARTH AND A CHARRED STAKE.
 IN 1998 EDWARDS SET A 2" ALUMINUM CAP STAMPED AS BELOW.

MONUMENTS AND ACCESSORIES FOUND: CONDITION AND SOURCE

- A 5/8" IRON ROD WITH A PLASTIC CAP MKD "951" LIES S 46°02'16" W, 22.35 FEET
- A 5/8" IRON ROD WITH A PLASTIC CAP MKD "951" LIES S 89°55'39" W, 17.86 FEET
- A 5/8" IRON ROD WITH A PLASTIC CAP MKD "951" LIES S 82°55'49" E, 29.62 FEET
- A 2" ALUMINUM CAP STAMPED AS BELOW.

MONUMENT DETAIL

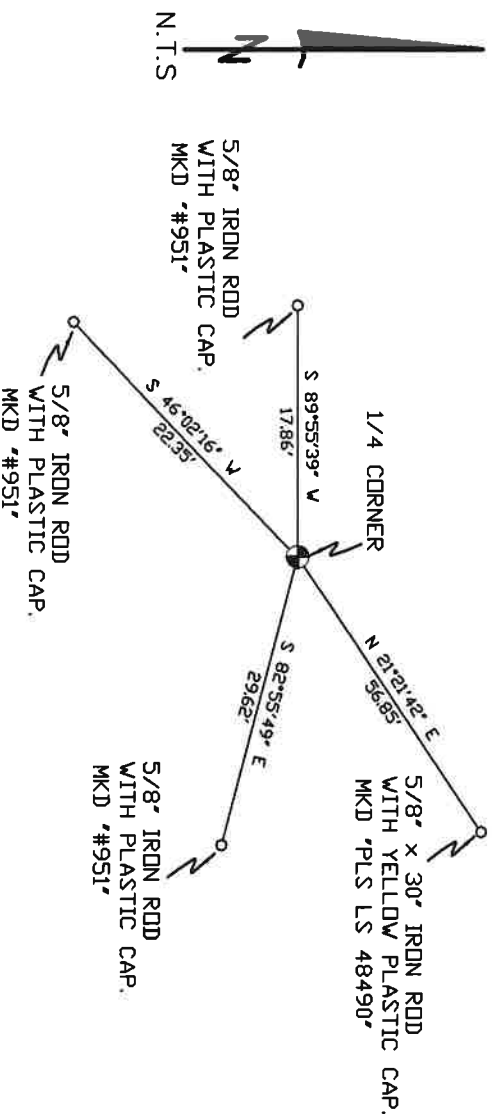


NAD 83/91
 OREGON STATE PLANE
 INTERNATIONAL FEET

7882228.95
 8545460.62

MONUMENT SET (PROCEDURES AND DESCRIPTION)

SKETCH



NEW ACCESSORIES FROM WHICH

A 5/8" x 30" IRON ROD WITH A YELLOW PLASTIC CAP MKD "PLS LS 48490" LIES N 21°21'42" E, 56.85 FEET.

LOCATION AND COMMENTS

CENTERLINE OF LOOP RD. 1
 MILE NORTH OF FEEDVILLE RD.

COMPASS DEC.

SURVEYOR'S SEAL

FIRM/AGENCY
 PRIMM LAND SURVEYING
 P.O. BOX 1322
 HERMISTON, OREGON 97838

REGISTERED
 PROFESSIONAL
 LAND SURVEYOR

PARTY CHIEF
 PAUL P. PILCH

NOTES

OREGON
 JULY 12, 2005
 KEITH P. PRIMM
 48490

WITNESS
 KEITH P. PRIMM

EXPIRATION DATE: 12/31/20

Track

21-004-c

01 DEC 20