

OREGON CORNER RESTORATION FORM

SECTION 15,22 TOWNSHIP 4 NORTH RANGE 29 EAST

N-15

COUNTY : UMATILLA DATE MAY/20

CORNER DESIGNATION

CONDITION REPORT ONLY

1/4 CORNER

NOT FOUND
 RENEWED
 UNCOVERED
 SURVEYED IN
 REFERENCED

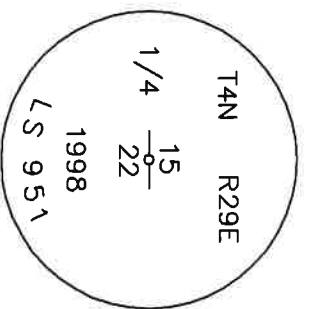
PREVIOUS RENEWALS / SURVEYS, ETC.

ORIGINALLY SURVEYED IN 1861 BY DAVENPORT UNDER CONTRACT #101. HE SET A POST IN A MOUND OF EARTH AND A CHARRED STAKE.
 IN 1998 EDWARDS SET A 1" x 30" IRON PIPE WITH A 2 3/8" BC BY SINGLE PROPORTION.

MONUMENTS AND ACCESSORIES FOUND: CONDITION AND SOURCE

- A 5/8" IRON ROD WITH A YELLOW PLASTIC CAP MKD "951" LIES N 00°13'27" E, 21.73 FEET
- A 5/8" IRON ROD WITH A YELLOW PLASTIC CAP MKD "951" LIES N 87°56'56" E, 331.31 FEET
- A 5/8" IRON ROD WITH A YELLOW PLASTIC CAP MKD "951" LIES S 00°16'26" W, 20.70 FEET
- A 5/8" IRON ROD WITH A YELLOW PLASTIC CAP MKD "951" LIES S 89°19'31" W, 36.51 FEET
- A 2 3/8" BC STAMPED AS BELOW.

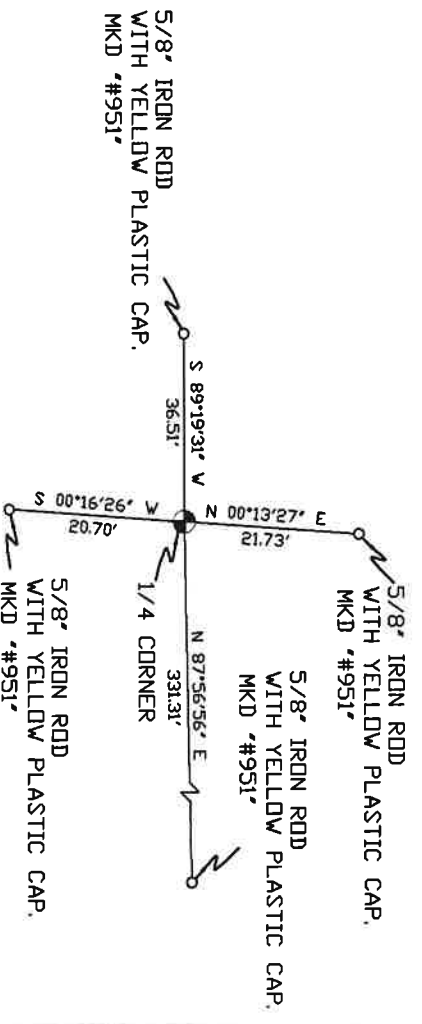
MONUMENT DETAIL



NAD 83/91
 OREGON STATE PLANE
 INTERNATIONAL FEET
 788113.65
 8540163.69

MONUMENT SET (PROCEDURES AND DESCRIPTION)

NEW ACCESSORIES FROM WHICH



SKETCH

LOCATION AND COMMENTS

FROM INTERSECTION OF HIGHLAND
 EXTENSION WITH EDWARDS ROAD
 GO SOUTH 1 MILE THEN GO EAST
 ACROSS FIELD 1 1/2 MILE TO
 CORNER.

COMPASS DEC.

FIRM/AGENCY
 PRIMM LAND SURVEYING
 P.O. BOX 1322
 HERMISTON, OREGON 97838

SURVEYOR'S SEAL

REGISTERED
 PROFESSIONAL
 LAND SURVEYOR

PARTY CHIEF
 BRIT L. PRIMM

NOTES

OREGON
 JULY 12, 2005
 KEITH P. PRIMM
 48490

WITNESS
 KETH P. PRIMM

EXPIRATION DATE: 12/31/20

~~788A~~

21-004-C

01 DEC 20