

# CORNER RESTORATION FORM

Township 4N Range 29E Section 16, 21 County UMATILLA

State OREGON Date 3/30/2023 Number N-11

- Condition Report Only
- Not Found
- Renewed
- Surveyed In
- Referenced

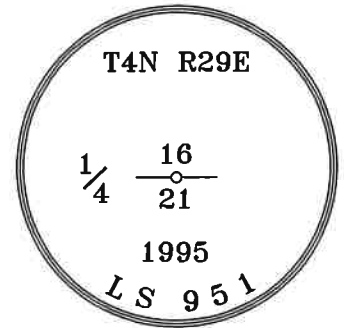
Corner Designation : 1/4 CORNER: 16, 21

Previous Renewals ORIGINAL SOURCE OF CORNER

ORIGINALLY SURVEYED IN 1861 BY DAVENPORT UNDER  
 CONTRACT #101, HE SET A STAKE IN MOUND OF EARTH  
 1995 EDWARDS SET A 1"X30" I.P. W/ 2-3/8" BRASS CAP BY  
 SINGLE PROPORTION COUNTY SURVEY NO. 95-059-B &  
 CORNER FORM NO. N9-95-059-B

### MONUMENT DETAIL

Found  Set



BASIS OF BEARINGS, NAD 83/91 OREGON STATE PLANE  
 COORDINATES NORTH ZONE:

NORTHING: 787953.64  
 EASTING: 8534880.72

#### Monument & Accessories Set/Found (Procedure and Description)

AT CORNER FOUND A 2 3/8" BRASS CAP, COUNTY SURVEY NO. 95-059-B & CORNER FORM N9-95-059-B

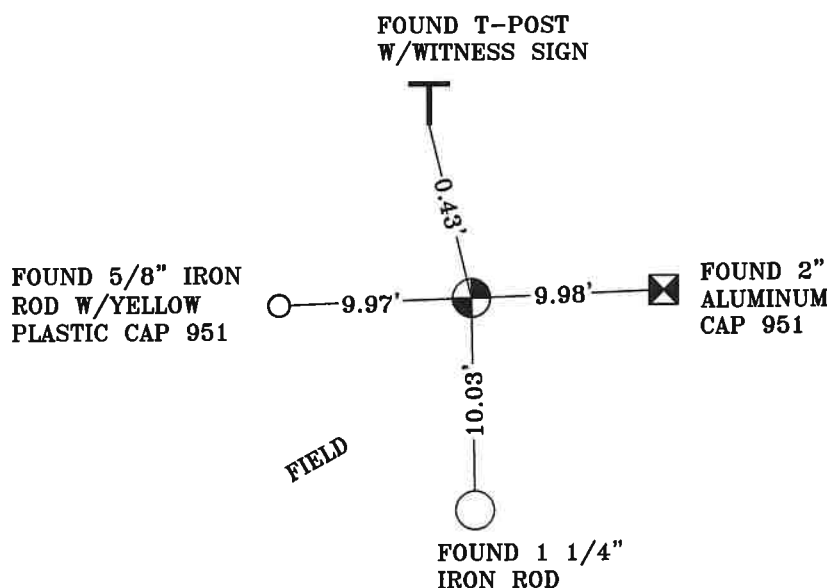
FOUND A 5/8" I.R. W/YPC 951 S 87°55' W 9.97', CORNER FORM NO. N9-95-059-B

FOUND A 1 1/4" I.R. S 00°59' W 10.03', CORNER FORM NO. N9-95-059-B

FOUND A 2" ALUM. CAP 951 N 87°58' E 9.98', CORNER FORM N9-95-059-B

FOUND A T-POST W/WITNESS SIGN N 13°02' W 0.43', CORNER FORM NO. N9-95-059-B

#### Sketch of Monument, Accessories and General Area



**REGISTERED  
 PROFESSIONAL  
 LAND SURVEYOR**

*Janet King*  
**OREGON  
 MAY 10, 2011  
 LANCE CLARK KING  
 61420**

**RENEWS: 6/30/2023**

#### Agency:

CK3, LLC  
 945 W. ORCHARD  
 HERMISTON OREGON 97838  
 OFFICE: 541-567-2345  
 FAX: 541-567-2305  
 WEB: CK3LLC.NET  
 Field Book # 0-350

#### COUNTY SURVEYOR RECORDING INFO

Received CT  
 Filed 5/4/23  
 Survey No. 23-042-C  
 Drawing No. \_\_\_\_\_  
 Index No. N-11