

OREGON CORNER RESTORATION FORM

SECTION 18,19,13,24 TOWNSHIP 4 NORTH RANGE 28,29 EAST N-1

COUNTY : UMATILLA DATE MAY/20

CORNER DESIGNATION

CONDITION REPORT ONLY

NOT FOUND

RENEWED

UNCOVERED

SURVEYED IN

REFERENCED

SECTION CORNER

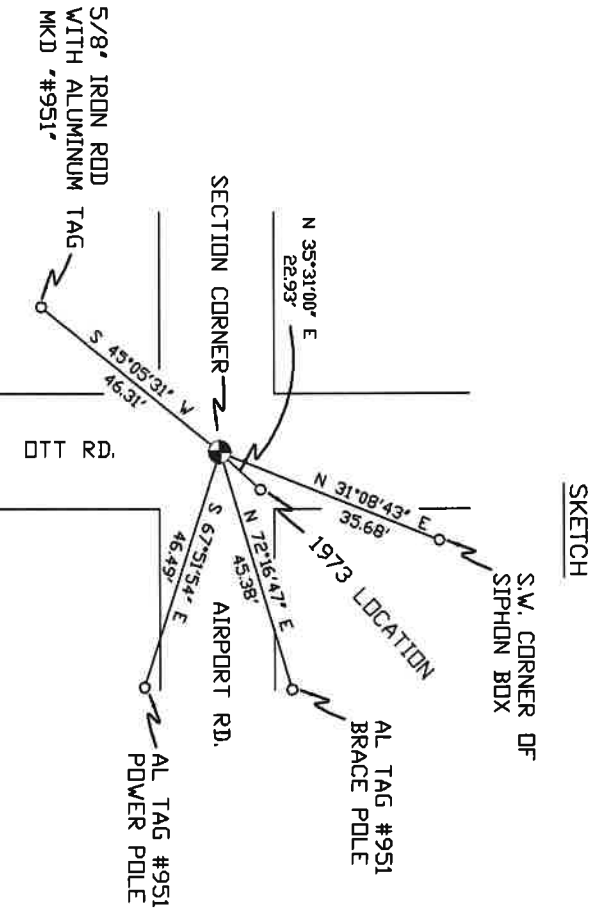
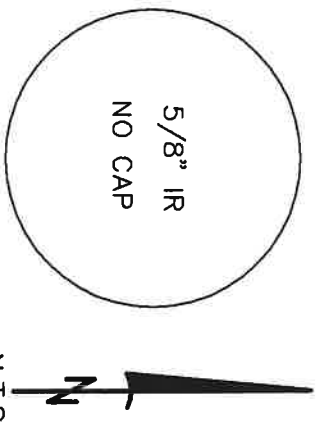
PREVIOUS RENEWALS / SURVEYS, ETC.

ORIGINALLY SURVEYED IN 1860 BY CAMPBELL UNDER CONTRACT #95. HE SET A POST IN A MOUND OF EARTH.
 IN 1954 HIGGINS SET A PIECE OF 1/2" REINFORCING STEEL.
 IN 1973 KRUMBEIN SET A 2 1/2" BC.
 IN 1980 KRUMBEIN SET A 2 1/2" BC AND REMOVED THE 1/2" IRON PIN INSIDE A 1 1/4" IRON PIPE.

MONUMENTS AND ACCESSORIES FOUND: CONDITION AND SOURCE

THE SW COR. OF A SIPHON BOX LIES N 31°08'43" E, 35.68 FEET.
 AN ALUMINUM TAG #951 IN A BRACE POLE LIES N 72°16'47" E, 45.38 FEET.
 AN ALUMINUM TAG #951 IN A POWER POLE LIES S 67°51'54" E, 46.49 FEET.
 A 5/8" IRON ROD WITH A PLASTIC CAP "#951" LIES S 45°05'31" W, 46.31 FEET.
 KRUMBEIN 1973 LOCATION LIES N 35°31'00" E, 22.93 FEET.
 A 5/8" IRON ROD WITH A MISSING CAP.

MONUMENT DETAIL



MONUMENT SET (PROCEDURES AND DESCRIPTION)

NAD 83/91
 OREGON STATE PLANE
 INTERNATIONAL FEET
 787622.19
 8521135.15

NEW ACCESSORIES FROM WHICH

LOCATION AND COMMENTS

AT INTERSECTION OF AIRPORT
 RD. AND OTT RD.

COMPASS DEC.

FIRM/AGENCY
 PRIMM LAND SURVEYING
 P.O. BOX 1322
 HERMISTON, OREGON 97838

SURVEYOR'S SEAL

REGISTERED
 PROFESSIONAL
 LAND SURVEYOR

PARTY CHIEF
 BRIT L. PRIMM

NOTES

OREGON
 JULY 12, 2005
 KEITH P. PRIMM
 48490

WITNESS
 KETH P. PRIMM

EXPIRATION DATE: 12/31/20

21-004 - C

Φ1 DEC 20