

OREGON CORNER RESTORATION FORM

SECTION: 13 TOWNSHIP: 4N

RANGE: 29E

L-25

COUNTY: UMATILLA

DATE: 9/2013

CORNER DESIGNATION

E 1/4

- CONDITION REPORT ONLY**
- NOT FOUND**
- RENEWED**
- UNRECORDED**
- SURVEYED IN**
- REFERENCED OUT**

PREVIOUS RENEWALS/SURVEYS ETC.

Originally surveyed by Campbell under Contract #95 in 1860. He drove a charred stake, raised mound of earth with trench and pits.

MONUMENTS AND ACCESSORIES FOUND: CONDITON AND SOURCE

Nothing found.

MONUMENT DETAIL

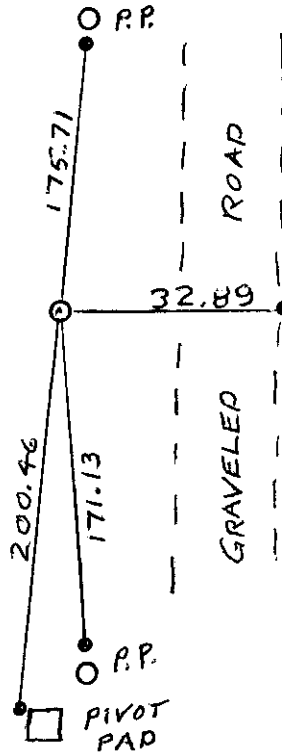
T4N R29E T4N R30E
 1/4
 S13 | S18
 2013
 LS 951

NAD 83/91

INTERNATIONAL FEET

791002.38

8553343.38



MONUMENT SET (PROCEDURES AND DESCRIPTION)

By single proportion I set a 1" x 15" iron pipe with a 2 1/2" brass cap 24" below the surface of a cultivated field, stamped as above, and poured concrete around it.

NEW ACCESSORIES FROM WHICH

- A 5/8" x 30" Iron Rebar with plastic cap #951 bears S 3° 53' 01" W 200.46'
- A 5/8" x 30" Iron Rebar with plastic cap #951 bears S 2° 56' 24" E 171.13'
- A 5/8" x 24" Iron Rebar with plastic cap #951 bears N 86° 05' 18" E 32.89'
- A 5/8" x 30" Iron Rebar with plastic cap #951 bears N 2° 04' 31" E 175.71'

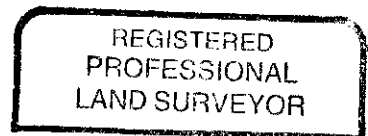
LOCATION AND COMMENTS

From the intersection of Loop Road and Kosmos Road, go east on Kosmos Road 1.5 mile to angle in said road. Then go south along a power transmission line 0.5 mile to corner.

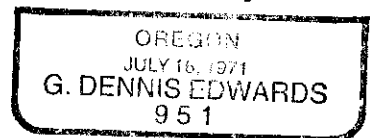
SURVEYOR'S SEAL

FIRM: EDWARDS SURVEYING LLC
 PO BOX 763 - HERMISTON OR 97838

PARTY CHIEF: G. EDWARDS
 WITNESS: R. FRITZ



G. Dennis Edwards



RENEWS 12/31/13

13-532-C