

# OREGON CORNER RESTORATION FORM

SECTION 13,14 TOWNSHIP 4 NORTH RANGE 29 EAST

L-21

COUNTY : UMATILLA DATE MAY/20

CORNER DESIGNATION

1/4 CORNER

- X CONDITION REPORT ONLY  
 NOT FOUND  
 RENEWED  
 UNCOVERED  
 SURVEYED IN  
 REFERENCED

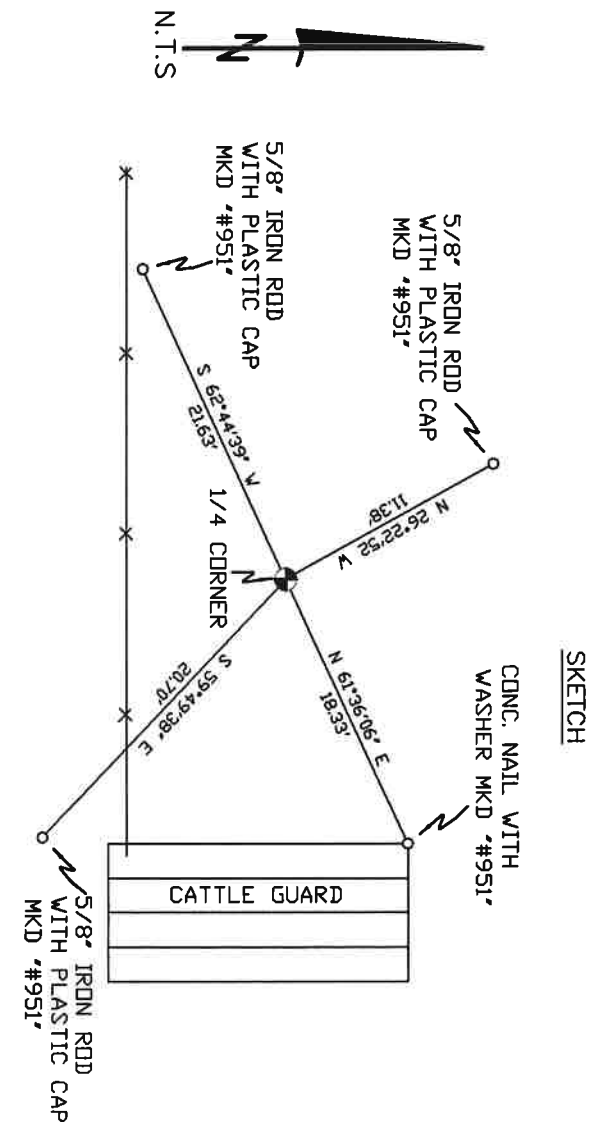
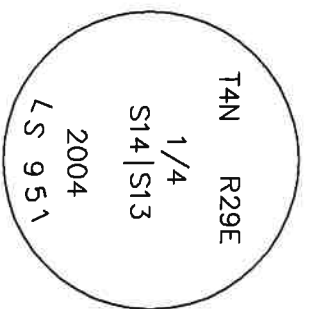
PREVIOUS RENEWALS / SURVEYS, ETC.

ORIGINALLY SURVEYED IN 1861 BY DAVENPORT UNDER CONTRACT #101. HE SET A POST IN A MOUND OF EARTH AND A CHARRED STAKE. EDWARDS SET A 2" ALUMINUM CAP IN 2004.

MONUMENTS AND ACCESSORIES FOUND: CONDITION AND SOURCE

- A CONCRETE NAIL WITH A WASHER "#951" LIES N 61°36'06" E, 18.33 FEET.
- A 5/8" IRON ROD WITH A PLASTIC CAP "#951" LIES N 26°22'52" W, 11.38 FEET.
- A 5/8" IRON ROD WITH A PLASTIC CAP "#951" LIES S 62°44'39" W, 21.63 FEET.
- A 5/8" IRON ROD WITH A PLASTIC CAP "#951" LIES S 59°49'38" E, 20.70 FEET.
- A 2 ALUMINUM CAP STAMPED AS BELOW.

MONUMENT DETAIL



MONUMENT SET ( PROCEDURES AND DESCRIPTION )

NAD 83/91  
 OREGON STATE PLANE  
 INTERNATIONAL FEET  
 790915.21  
 8548055.45

NEW ACCESSORIES FROM WHICH

LOCATION AND COMMENTS

FROM INTERSECTION OF LOOP RD. AND HIGHLAND EXTENSION GO SOUTH ON LOOP RD. 0.5 MILES THEN GO EAST 0.5 MILES ON GRAVEL RD. TO CORNER.

COMPASS DEC.

FIRM/AGENCY  
 PRIMM LAND SURVEYING  
 P.O. BOX 1322  
 HERMISTON, OREGON 97838

SURVEYOR'S SEAL

REGISTERED  
 PROFESSIONAL  
 LAND SURVEYOR

PARTY CHIEF  
 PAUL P. PILCH

NOTES

OREGON  
 JULY 12, 2005  
 KEITH P. PRIMM  
 48490

WITNESS  
 KEITH P. PRIMM

EXPIRATION DATE: 12/31/20

21-004-C

Φ1 DEC 20