

OREGON CORNER RESTORATION FORM

SECTION: 15 TOWNSHIP: 4N

RANGE: 29E

L-17

COUNTY: UMATILLA

DATE: 9/2013

CORNER DESIGNATION

E 1/4

- CONDITION REPORT ONLY**
- NOT FOUND**
- RENEWED**
- UNRECORDED**
- SURVEYED IN**
- REFERENCED OUT**

PREVIOUS RENEWALS/SURVEYS ETC.

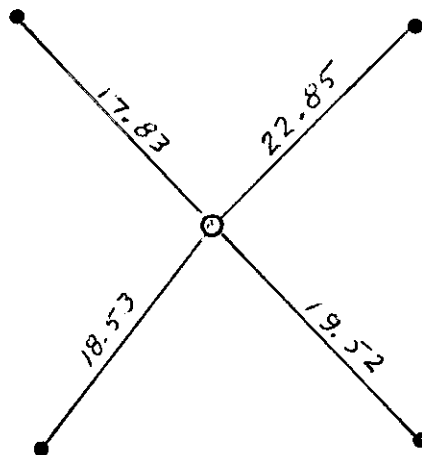
Originally surveyed by Davenport under Contract #101 in 1861. He set a post in mound with charred stake.

MONUMENTS AND ACCESSORIES FOUND: CONDITON AND SOURCE

Nothing found.

MONUMENT DETAIL

T4N R29E
 1/4
 S15 | S14
 2012
 LS 951



NAD 83/91

OREGON STATE PLANE
 INTERNATIONAL FEET
 790826.45
 8542757.75

MONUMENT SET (PROCEDURES AND DESCRIPTION)

By single proportion I set a 1" x 30" iron pipe with a 2 1/2" brass cap at the surface, stamped as above.

NEW ACCESSORIES FROM WHICH

- A 5/8" x 30" Iron Rebar with plastic cap #951 bears N 43° 11' 39" E 22.85'
- A 5/8" x 30" Iron Rebar with plastic cap #951 bears N 44° 39' 47" W 17.83'
- A 5/8" x 30" Iron Rebar with plastic cap #951 bears S 37° 50' 04" W 18.53'
- A 5/8" x 30" Iron Rebar with plastic cap #951 bears S 42° 48' 04" E 19.52'

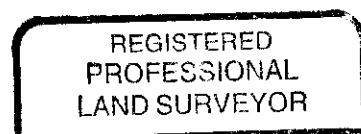
LOCATION AND COMMENTS

From the intersection of Loop Rd. with the East end of E Highland Extension go West on Highland Extension 0.5 mile. Then go South 0.5 mile across a field to the corner.

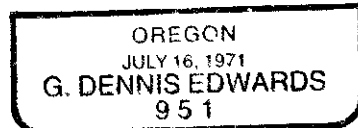
SURVEYOR'S SEAL

FIRM: EDWARDS SURVEYING LLC
 PO BOX 763 - HERMISTON OR 97838

PARTY CHIEF: G. EDWARDS
 WITNESS: R. SMITH



G. Dennis Edwards



RENEWS 12/31/13

13-532-C