

OREGON CORNER RESTORATION FORM

SECTION 8,9,16,17 TOWNSHIP 4 NORTH RANGE 29 EAST

J-9

COUNTY : UMATILLA DATE MAY/20

CORNER DESIGNATION

CONDITION REPORT ONLY
 NOT FOUND

SECTION CORNER

RENEWED
 UNCOVERED
 SURVEYED IN
 REFERENCED

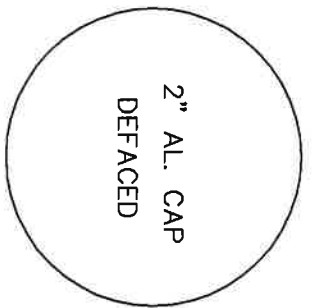
PREVIOUS RENEWALS / SURVEYS, ETC.

ORIGINALLY SURVEYED IN 1861 BY DAVENPORT UNDER CONTRACT #101. HE SET A POST IN A MOUND OF EARTH AND A CHARRED STAKE.
 IN 1974 KRUMBEN SET A 2 1/2" BC AND WC. SEE SURVEY FOR PAT WALCHIL.
 IN 1995 EDWARDS SET A 5/8" x 30" IRON ROD WITH A 2" ALUM. CAP STAMPED AS BELOW UTILIZING KRUMBENS NORTHING AND PROPORTIONING THE EASTING.

MONUMENTS AND ACCESSORIES FOUND: CONDITION AND SOURCE

AN ALUMINUM TAG #951 ON A POWER POLE LIES N 78°00'01" W, 84.54 FEET.
 AN ALUMINUM TAG #951 GLUED TO THE NE COR. OF CONC. PAD LIES S 38°41'39" W, 76.84 FEET.
 AN ALUMINUM TAG #951 ON R X R TIE FENCE POST LIES S 63°38'36" E, 81.15 FEET.
 A 2 3/8" BC STAMPED AS BELOW LIES N 40°51'36" W, 29.91 FEET.
 A 2" ALUMINUM CAP STAMPED AS BELOW.

MONUMENT DETAIL

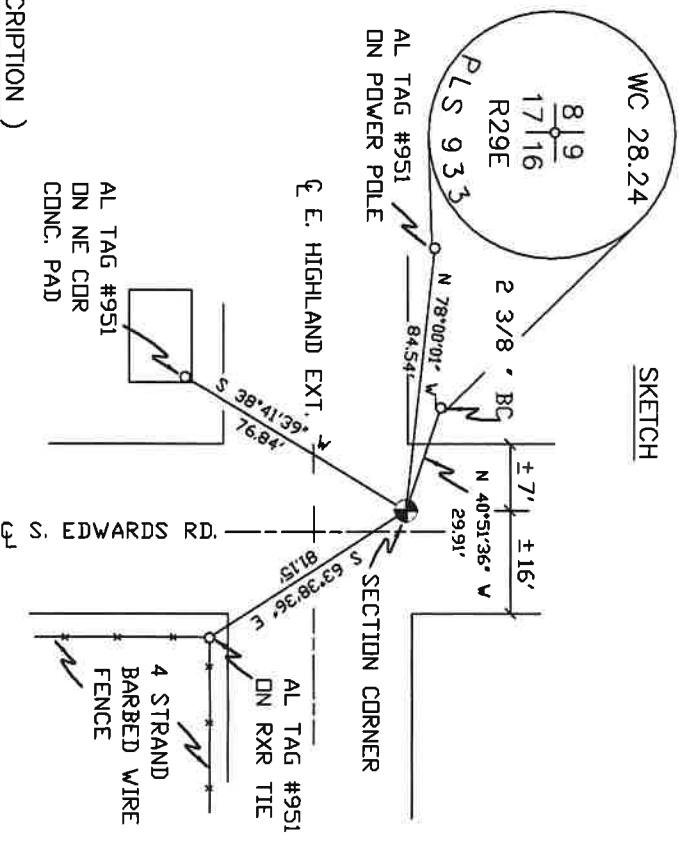


NAD 83/91
 OREGON STATE PLANE
 INTERNATIONAL FEET

793163.41
 8532172.69

MONUMENT SET (PROCEDURES AND DESCRIPTION)

SKETCH



NEW ACCESSORIES FROM WHICH

LOCATION AND COMMENTS

AT INTERSECTION OF
 E. HIGHLAND EXT.
 AND S. EDWARDS RD.

COMPASS DEC.

FIRM/AGENCY
 PRIMM LAND SURVEYING
 P.O. BOX 1322
 HERMISTON, OREGON 97838

SURVEYOR'S SEAL

REGISTERED
 PROFESSIONAL
 LAND SURVEYOR

PARTY CHIEF
 BRIT L. PRIMM

NOTES

OREGON
 JULY 12, 2005
 KEITH P. PRIMM
 48490

WITNESS
 KEITH P. PRIMM

EXPIRATION DATE: 12/31/20

21-004-c

Φ1 DEC 20