

# OREGON CORNER RESTORATION FORM

SECTION 7,18 TOWNSHIP 4 NORTH RANGE 29 EAST

J-3

COUNTY : UMATILLA DATE MAY/20

CORNER DESIGNATION

X CONDITION REPORT ONLY  
NOT FOUND

1/4 CORNER

RENEWED  
 UNCOVERED  
 SURVEYED IN  
 REFERENCED

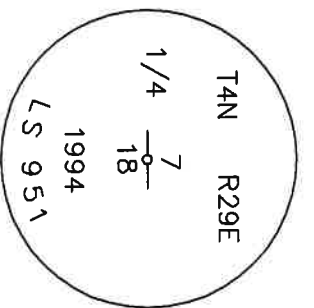
PREVIOUS RENEWALS / SURVEYS, ETC.

ORIGINALLY SURVEYED IN 1861 BY DAVENPORT UNDER CONTRACT #101. HE SET A POST IN A MOUND OF EARTH AND A CHARRED STAKE. IN 1995 EDWARDS SET A 1" x 30" IRON PIPE WITH A 2 3/8" BC STAMPED AS BELOW, BY SINGLE PROPORTION.

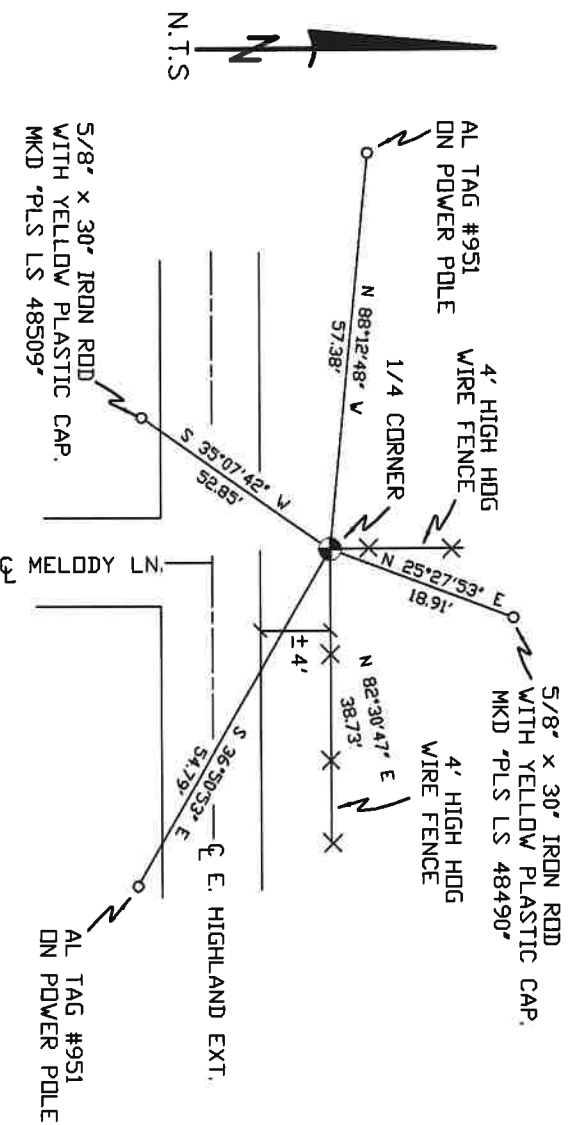
MONUMENTS AND ACCESSORIES FOUND: CONDITION AND SOURCE

AN ALUMINUM TAG #951 ON A POWER POLE LIES N 88°12'48" W, 57.38 FEET.  
AN ALUMINUM TAG #951 ON A POWER POLE LIES S 36°50'53" E, 54.79 FEET.  
A 5/8" x 30" IRON ROD WITH A YELLOW PLASTIC CAP MKD "PLS LS 48509" LIES S 35°07'42" W, 52.85 FEET.  
A 2 3/8" BC STAMPED AS BELOW.

MONUMENT DETAIL



SKETCH



MONUMENT SET ( PROCEDURES AND DESCRIPTION )

NAD 83/91  
OREGON STATE PLANE  
INTERNATIONAL FEET  
792990.60  
8524222.72

NEW ACCESSORIES FROM WHICH

A 5/8" x 30" IRON ROD WITH A YELLOW PLASTIC CAP MKD "PLS LS 48490" LIES N 25°27'53" E, 18.91 FEET.

LOCATION AND COMMENTS

FROM INTERSECTION OF CANAL RD.  
WITH E. HIGHLAND EXT. GO WEST  
ON HIGHLAND 1/2 MILE TO CORNER.

COMPASS DEC.

SURVEYOR'S SEAL

FIRM/AGENCY  
PRIMM LAND SURVEYING  
P.O. BOX 1322  
HERMISTON, OREGON 97838

REGISTERED  
PROFESSIONAL  
LAND SURVEYOR

PARTY CHIEF  
BRIT L. PRIMM

NOTES

OREGON  
JULY 12, 2005  
KEITH P. PRIMM  
48490

WITNESS  
KEITH P. PRIMM

EXPIRATION DATE: 12/31/20

TAN 21-004-C

Φ1 DEC 20