

# OREGON CORNER RESTORATION FORM

SECTION 10.11,14,15 TOWNSHIP 4 NORTH RANGE 29 EAST J-17

COUNTY : UMATILLA DATE MAY,20

CORNER DESIGNATION

- CONDITION REPORT ONLY  
 NOT FOUND  
 RENEWED  
 UNCOVERED  
 SURVEYED IN  
 REFERENCED

SECTION CORNER

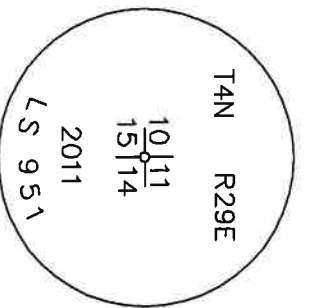
PREVIOUS RENEWALS / SURVEYS, ETC.

ORIGINALLY SURVEYED IN 1861 BY DAVENPORT UNDER CONTRACT #101. HE SET A POST IN A MOUND OF EARTH AND A CHARRED STAKE. EDWARDS SET A 2 3/8" BC IN 2011.

MONUMENTS AND ACCESSORIES FOUND: CONDITION AND SOURCE

- A 5/8" IRON ROD WITH A PLASTIC CAP "#951" LIES N 0°22'50" E, 630.00 FEET.
- A 5/8" IRON ROD WITH A PLASTIC CAP "#951" LIES N 88°35'02" E, 114.33 FEET.
- A 5/8" IRON ROD WITH A PLASTIC CAP "#951" LIES S 0°25'06" E, 60.00 FEET.
- A 5/8" IRON ROD WITH A PLASTIC CAP "#951" LIES S 48°52'22" W, 15.83 FEET.
- A 2 3/8" BC STAMPED AS BELOW.

MONUMENT DETAIL

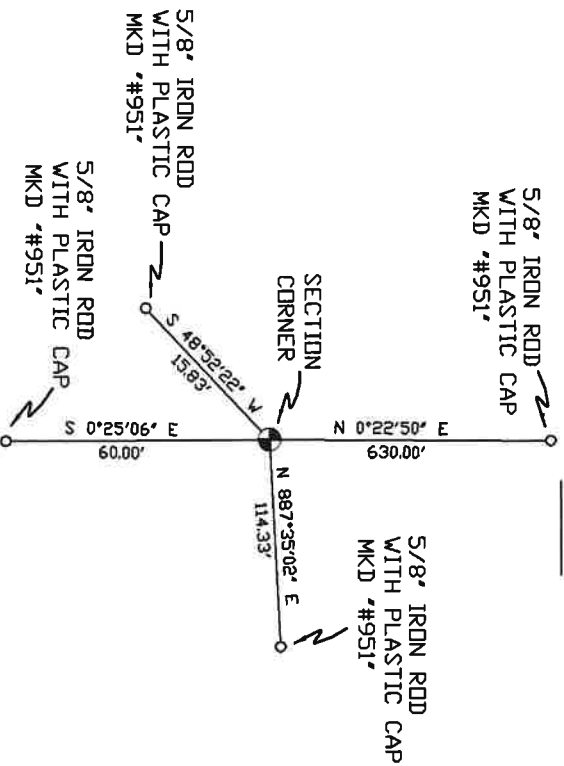


NAD 83/91  
OREGON STATE PLANE  
INTERNATIONAL FEET

793466.02  
8542693.93

MONUMENT SET ( PROCEDURES AND DESCRIPTION )

SKETCH



NEW ACCESSORIES FROM WHICH

LOCATION AND COMMENTS

FROM INTERSECTION OF EDWARDS RD. AND HIGHLAND EXTENSION GO EAST ON HIGHLAND EXTENSION 2.0 MILES ON NORTH SIDE OF ROAD JUST WEST OF FARM ROAD.

COMPASS DEC.


SURVEYOR'S SEAL

FIRM/AGENCY  
PRIMM LAND SURVEYING  
P.O. BOX 1322  
HERMISTON, OREGON 97838

REGISTERED  
PROFESSIONAL  
LAND SURVEYOR

PARTY CHIEF  
PAUL P. PILCH

NOTES

  
 OREGON  
 JULY 12, 2005  
 KEITH P. PRIMM  
 48490

WITNESS  
KEITH P. PRIMM

EXPIRATION DATE: 12/31/20

JMP

21-004-C

Φ 1 DEC 20