

OREGON CORNER RESTORATION FORM

SECTION 9,10,15,16 TOWNSHIP 4 NORTH RANGE 29 EAST J-13

COUNTY : UMATILLA DATE MAY/20

CORNER DESIGNATION

- CONDITION REPORT ONLY
- NOT FOUND
- RENEWED
- UNCOVERED
- SURVEYED IN
- REFERENCED

SECTION CORNER

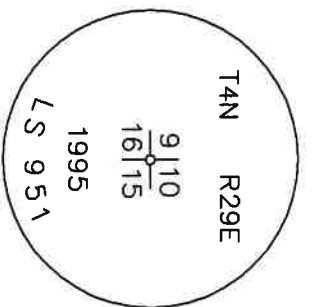
PREVIOUS RENEWALS / SURVEYS, ETC.

ORIGINALLY SURVEYED IN 1861 BY DAVENPORT UNDER CONTRACT #101. HE SET A POST IN A MOUND OF EARTH AND A CHARRED STAKE.
 PALMER SET A 5/8" IRON ROD 30" N & 30" S OF HIS COMPUTED CORNER.
 IN 1995 EDWARDS SET A 1" x 30" IRON PIPE WITH A 2 3/8" BC STAMPED AS BELOW BY DOUBLE PROPORTION.

MONUMENTS AND ACCESSORIES FOUND: CONDITION AND SOURCE

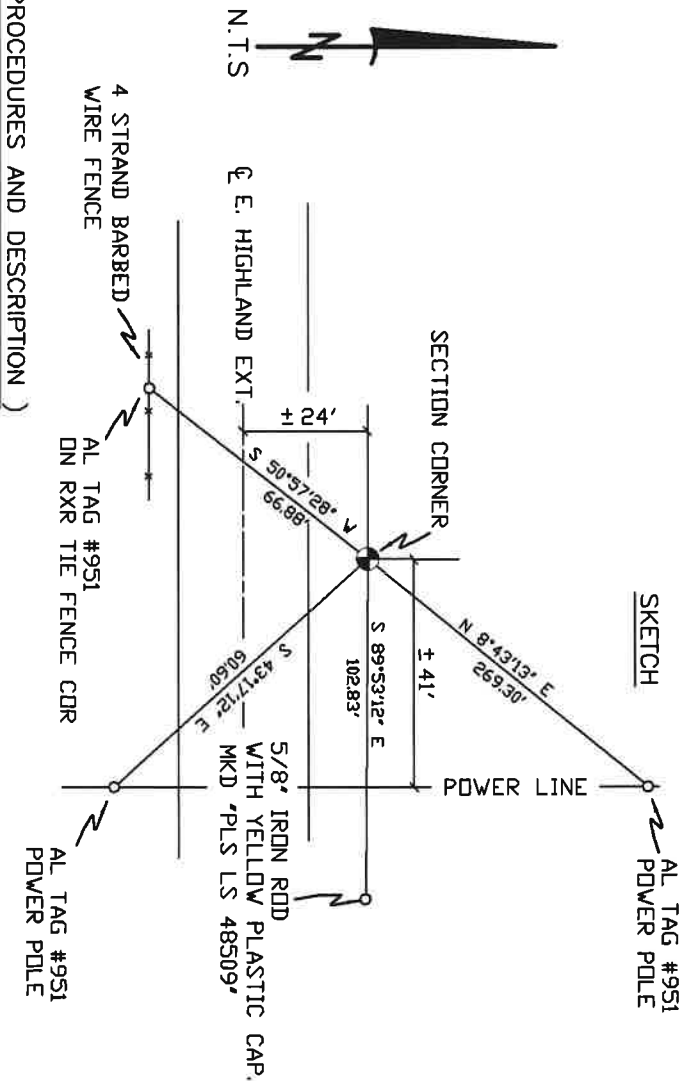
AN ALUMINUM TAG #951 ON A POWER POLE LIES N 8°43'13" E, 269.30 FEET.
 AN ALUMINUM TAG #951 ON A POWER POLE LIES S 43°17'12" E, 60.60 FEET.
 AN ALUMINUM TAG #951 ON A RXR TIE FENCE COR LIES S 50°57'28" W, 66.88 FEET.
 A 5/8" IRON ROD WITH A YELLOW PLASTIC CAP MKD "PLS LS 48509" LIES S 89°53'12" E, 102.83 FEET.
 A 2 3/8" BC STAMPED AS BELOW.

MONUMENT DETAIL



MONUMENT SET (PROCEDURES AND DESCRIPTION)

NAD 83/91
 OREGON STATE PLANE
 INTERNATIONAL FEET
 793329.63
 8537398.76



NEW ACCESSORIES FROM WHICH

LOCATION AND COMMENTS

FROM INTERSECTION OF EDWARDS RD. AND HIGHLAND EXT. GO EAST ON HIGHLAND 1 MILE TO CORNER.

COMPASS DEC.

SURVEYOR'S SEAL

FIRM/AGENCY
 PRIMA LAND SURVEYING
 P.O. BOX 1322
 HERMISTON, OREGON 97838

REGISTERED
 PROFESSIONAL
 LAND SURVEYOR

PARTY CHIEF
 PAUL P. PILCH

NOTES

OREGON
 JULY 12, 2005
 KEITH P. PRIMM
 48490

WITNESS
 KEITH P. PRIMM

EXPIRATION DATE: 12/31/20

TPM

21-004-C

31 DEC 20