

# OREGON CORNER RESTORATION FORM

SECTION 9.16 TOWNSHIP 4 NORTH RANGE 29 EAST J-11  
 COUNTY : UMATILLA DATE MAY/20

CORNER DESIGNATION

1/4 CORNER

- CONDITION REPORT ONLY  
 NOT FOUND  
 RENEWED  
 UNCOVERED  
 SURVEYED IN  
 REFERENCED

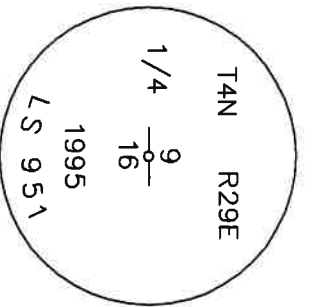
PREVIOUS RENEWALS / SURVEYS, ETC.

ORIGINALLY SURVEYED IN 1861 BY DAVENPORT UNDER CONTRACT #101. HE SET A POST IN A MOUND OF EARTH AND A CHARRED STAKE.  
 IN 1995 EDWARDS SET A 1" x 30" IRON PIPE WITH A 2 3/8" BC STAMPED AS BELOW,  
 BY SINGLE PROPORTION.

MONUMENTS AND ACCESSORIES FOUND: CONDITION AND SOURCE

- A 3" IRRIGATION RISER LIES S 83°50'34" E, 78.73 FEET.
- A 3" IRRIGATION RISER LIES S 76°31'46" W, 42.51 FEET.
- A 1 1/4" IRON ROD LIES S 0°05'02" E, 25.63 FEET.
- A 2 3/8" B.C. STAMPED AS BELOW LIES S 0°06'58" E, 59.85 FEET.
- A 2 3/8" BC STAMPED AS BELOW.

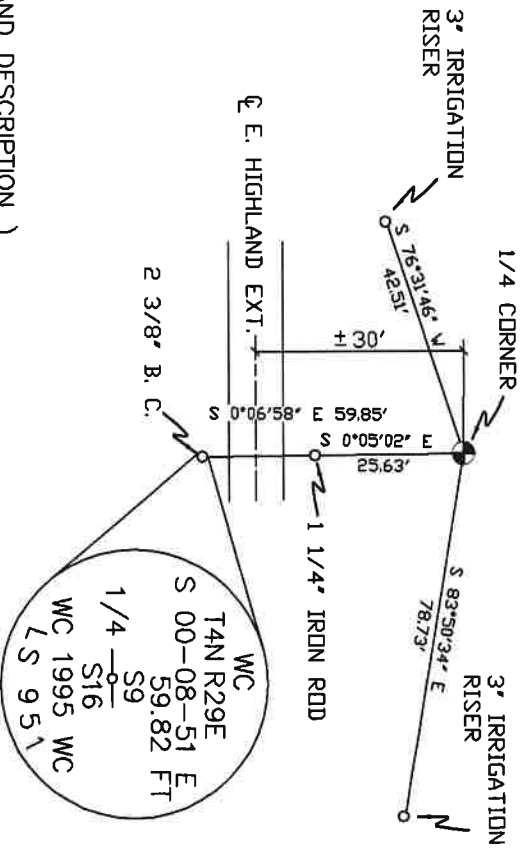
MONUMENT DETAIL



NAD 83/91  
 OREGON STATE PLANE  
 INTERNATIONAL FEET  
 793246.50  
 8534785.76

MONUMENT SET ( PROCEDURES AND DESCRIPTION )

NEW ACCESSORIES FROM WHICH



SKETCH

LOCATION AND COMMENTS

FROM INTERSECTION OF EDWARDS RD. WITH HIGHLAND EXTENSION GO EAST ON HIGHLAND 1/2 MILE TO CORNER.

COMPASS DEC.

FIRM/AGENCY  
 PRIMM LAND SURVEYING  
 P.O. BOX 1322  
 HERMISTON, OREGON 97838

SURVEYOR'S SEAL

REGISTERED  
 PROFESSIONAL  
 LAND SURVEYOR

PARTY CHIEF  
 BRIT L. PRIMM

NOTES

OREGON  
 JULY 12, 2005  
 KEITH P. PRIMM  
 48490

WITNESS  
 KEITH P. PRIMM

EXPIRATION DATE: 12/31/20

IWA 21-004-C

Φ1 DEC 20