

OREGON CORNER RESTORATION FORM

SECTION 7,12,13,18 TOWNSHIP 4 NORTH RANGE 28,29 EAST J-1

COUNTY : UMATILLA DATE MAY/20

CORNER DESIGNATION

CONDITION REPORT ONLY
 NOT FOUND

SECTION CORNER

RENEWED
 UNCOVERED
 SURVEYED IN
 REFERENCED

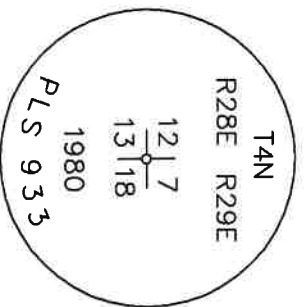
PREVIOUS RENEWALS / SURVEYS, ETC.

ORIGINALLY SURVEYED IN 1860 BY CAMPBELL UNDER CONTRACT #95. HE SET A POST IN A MOUND OF EARTH.
 IN 1980 KRUMBEN SET A 2 1/2" BC SEE SURVEY #S-156-C.

MONUMENTS AND ACCESSORIES FOUND: CONDITION AND SOURCE

- AN ALUMINUM TAG #951 ON A POWER POLE LIES N 36°16'57" E, 37.99 FEET.
- AN ALUMINUM TAG #951 ON A POWER POLE LIES N 81°20'53" W, 221.70 FEET.
- A 2 3/8" B.C. STAMPED AS BELOW LIES N 0°01'28" E, 9.94 FEET.
- A 2 3/8" B.C. STAMPED AS BELOW LIES N 74°22'42" E, 20.59 FEET.
- A 2 3/8" BC STAMPED AS BELOW.

MONUMENT DETAIL

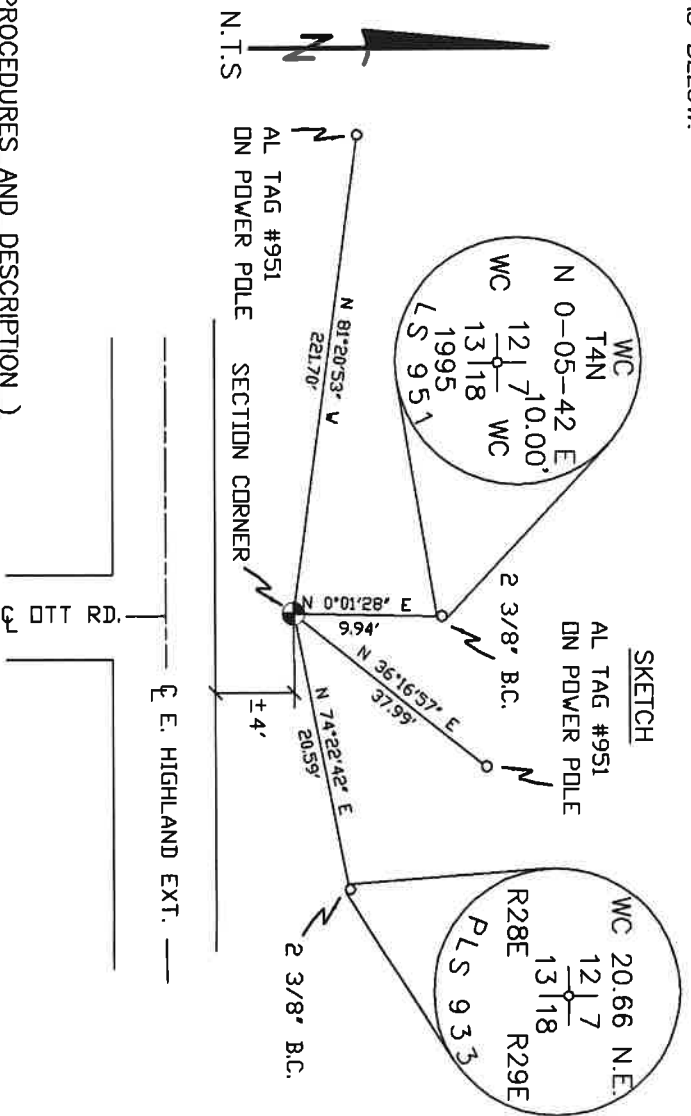


NAD 83/91
 OREGON STATE PLANE
 INTERNATIONAL FEET

792916.89
 8521063.91

MONUMENT SET (PROCEDURES AND DESCRIPTION)

SKETCH



NEW ACCESSORIES FROM WHICH

LOCATION AND COMMENTS

FROM INTERSECTION OF HIGHLAND
 EXT. WITH STANFIELD LOOP RD.
 GO EAST 1/4 MILE ON HIGHLAND
 TO CORNER.

COMPASS DEC.

SURVEYOR'S SEAL

FIRM/AGENCY
 PRIMM LAND SURVEYING
 P.O. BOX 1322
 HERMISTON, OREGON 97838

REGISTERED
 PROFESSIONAL
 LAND SURVEYOR

PARTY CHIEF
 BRIT L. PRIMM

NOTES

OREGON
 JULY 12, 2005
 KEITH P. PRIMM
 48490

WITNESS
 KEITH P. PRIMM

EXPIRATION DATE: 12/31/20

TMA

21-004-C

Φ1 DEC 20