

OREGON CORNER RESTORATION FORM

SECTION 8,9 TOWNSHIP 4 NORTH RANGE 29 EAST

G-9

COUNTY : UMATILLA DATE 02/02

CORNER DESIGNATION

1/4 CORNER

CONDITION REPORT ONLY

NOT FOUND

RENEWED

UNCOVERED

SURVEYED IN

REFERENCED

PREVIOUS RENEWALS / SURVEYS, ETC.

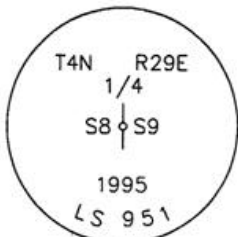
ORIGINALLY SURVEYED IN 1861 BY DAVENPORT UNDER CONTRACT #101. HE SET A POST IN A MOUND OF EARTH AND A CHARRED STAKE. IN 1995 EDWARDS SET A 1" x 30" IRON PIPE WITH A 2 3/8" BRASS CAP STAMPED AS BELOW BY SINGLE PROPORTION.

MONUMENTS AND ACCESSORIES FOUND: CONDITION AND SOURCE

A 2 3/8" BC STAMPED AS BELOW LIES S 89°40'15" W, 31.71 FEET.

A 5/8" IRON ROD WITH A YELLOW PLASTIC CAP MKD "#951" LIES N 89°33'42" E, 17.82 FEET.

MONUMENT DETAIL

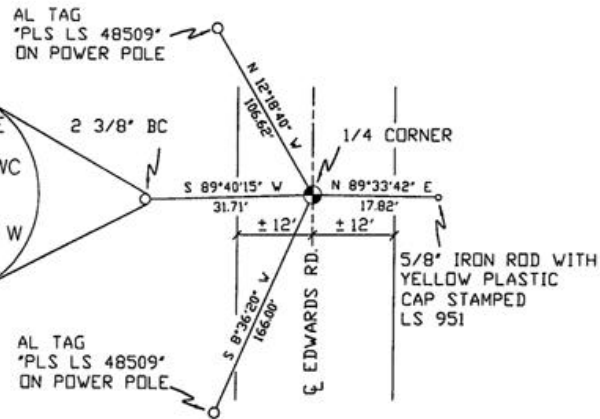


NAD 83/91
OREGON STATE PLANE
INTERNATIONAL FEET

795824.9232
8532148.9936



SKETCH



MONUMENT SET (PROCEDURES AND DESCRIPTION)

NEW ACCESSORIES FROM WHICH

A 1" x 1" ALUMINUM TAG MKD "PLS LS 48509" ON A POWER POLE LIES N 12°18'40" W, 106.62 FEET.

A 1" x 1" ALUMINUM TAG MKD "PLS LS 48509" ON A POWER POLE LIES S 8°36'20" W, 166.00 FEET.

LOCATION AND COMMENTS

FROM INTERSECTION OF HIGHLAND EXT. AND EDWARDS RD. GO NORTH ON EDWARDS 1/2 MILE TO CORNER.

COMPASS DEC.

FIRM/AGENCY
PRIMM LAND SURVEYING
P.O. BOX 1322
HERMISTON, OREGON 97838

PARTY CHIEF
KEITH P. PRIMM

NOTES

WITNESS
BRIT L. PRIMM

SURVEYOR'S SEAL

REGISTERED
PROFESSIONAL
LAND SURVEYOR

Brit L. Primm

OREGON
JULY 13, 1999
BRIT L. PRIMM
48509

EXPIRATION DATE: 12/31/02

03-52-g