

OREGON CORNER RESTORATION FORM

Section 7 Township 4 N Range 29 E

G-5

County UMATILLA Date 3/95

CORNER DESIGNATION

E 1/4 Cor.

- Condition Report Only
- Not Found
- Renewed
- Unrecorded
- Surveyed In
- Referenced Out

Previous Renewals/Surveys, etc. ORIG SUR. DAVENPORT 1861 # 101
He set a post in mound with charred stake

Monument(s) & Accessories Found: (Condition and Source)

Nothing

Monument Detail

Sketch



Monument Set (Procedures and Description)

By single proportion I set 1"x30" I. Pipe with 2 3/8"
BC, stamped as above 6" below surface of Grav. Rd.

SEE MY 1992-1 COUNTY PUBLIC MONUMENTATION SUR.

New Accessories

a 1"x30" I. Pipe with 2 3/8" BC. Bears WEST 33.00 Ft.

a 1/4" washer stamped 951 glued to SW cor. bridge abutment

Bears N 2° 45' 30" E 161.11 Ft.

a 1" washer #951 glued to NW cor. loading dock Bears NB 4° 31' E 222.74 Ft

align tag #951 in R. Pole Bears S 11° 43' 30" W 100.61 Ft.

Location & Comments

Surveyor's Seal

From Intersection of Compass Declination _____

Highland extension Firm/Agency EDWARDS

with Canal Rd. go SURVEYING

N. on Canal 1/2 Mile Address P. Box 763

to Cor. HERMISTON, OR 97038

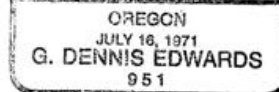
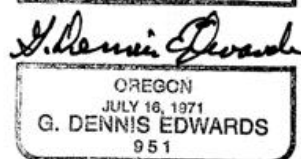
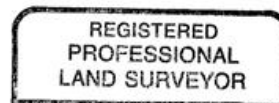
RECEIVED BY _____ Party Chief D. EDWARDS

Umatilla County Surveyor _____ Notes _____

Date _____ Witness J. COPPOCK

Rec'd by _____

No. 95-59-B



RENEWS 12/31/95