

OREGON CORNER RESTORATION FORM

SECTION 9 TOWNSHIP 4 NORTH RANGE 29 EAST E-9
 COUNTY : UMATILLA DATE 01-2002

CORNER DESIGNATION

NW CORNER

- CONDITION REPORT ONLY
- NOT FOUND
- RENEWED
- UNCOVERED
- SURVEYED IN
- REFERENCED

PREVIOUS RENEWALS / SURVEYS, ETC.

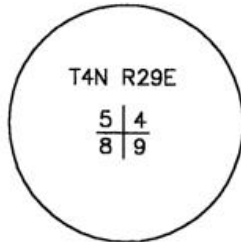
ORIGINAL SURVEY DAVENPORT 1861 #101, HE SET A POST IN A MOUND WITH CHARRED STAKE.
 1976 PALMER SET 5/8" IRON REBAR (#M-43)
 1986 CRAMER SET 7/8" IRON ROD (#86-105-A)

MONUMENTS AND ACCESSORIES FOUND: CONDITION AND SOURCE

FOUND CRAMER'S 7/8" IRON ROD FROM WHICH:

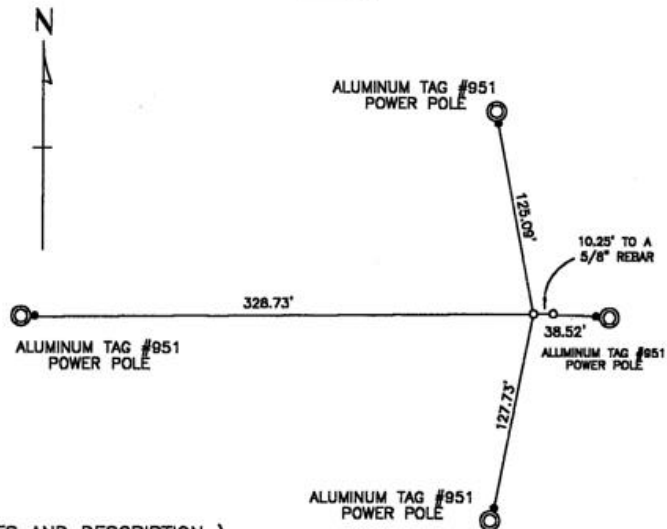
- PALMER'S 5/8" IRON ROD BEARS N 89°58'01" E 10.25 FEET
- AN ALUMINUM TAG #951 ON A POWER POLE BEARS S 89°29'02" W 328.73 FEET
- AN ALUMINUM TAG #951 ON A POWER POLE BEARS S 11°11'50" W 127.73 FEET
- AN ALUMINUM TAG #951 ON A POWER POLE BEARS S 87°42'51" E 38.52 FEET
- AN ALUMINUM TAG #951 ON A POWER POLE BEARS N 10°53'57" W 125.09 FEET

MONUMENT DETAIL



NAD 83/91
 OREGON STATE PLANE
 INTERNATIONAL FEET
 798486.1975
 8532125.5177

SKETCH



MONUMENT SET (PROCEDURES AND DESCRIPTION)

NA

NEW ACCESSORIES FROM WHICH

NA

LOCATION AND COMMENTS

FROM THE INTERSECTION OF
 PUNKIN CENTER ROAD AND
 EDWARDS ROAD, GO SOUTH
 ON EDWARDS 1 MILE TO
 CORNER

COMPASS DEC.

FIRM/AGENCY
 EDWARDS SURVEYING
 P.O. BOX 763
 HERMISTON, OREGON 97838

PARTY CHIEF
 CURTIS FAVOREL
NOTES

WITNESS
 WALT MUNDELL

SURVEYOR'S SEAL

REGISTERED
 PROFESSIONAL
 LAND SURVEYOR

G. Dennis Edwards

OREGON
 JULY 16, 1971
 G. DENNIS EDWARDS
 9 5 1
 RENEWS 12/31/2003

03-53-9