

# OREGON CORNER RESTORATION FORM

SECTION 5,6,7,8 TOWNSHIP 4 NORTH RANGE 29 EAST  
 COUNTY : UMATILLA DATE MAY/20

E-5

CORNER DESIGNATION

SECTION CORNER

- CONDITION REPORT ONLY
- NOT FOUND
- RENEWED
- UNCOVERED
- SURVEYED IN
- REFERENCED

PREVIOUS RENEWALS / SURVEYS, ETC.

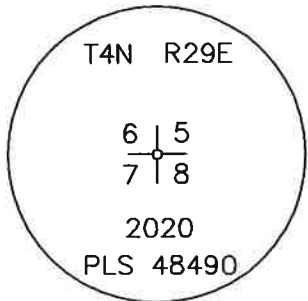
ORIGINALLY SURVEYED IN 1861 BY DAVENPORT UNDER CONTRACT #101. HE SET A POST IN A MOUND OF EARTH AND A CHARRED STAKE.  
 IN ±1979 KRUMBEIN? SET A BC.  
 IN 1910 KIMBRELL SET AN IRON PIPE, BK2 PG 152.  
 IN 1987 CRAMER SET A 1" X 30" IRON PIPE IN CENTER KIMBRELLS.  
 IN 1994 EDWARDS SET A 1' X 30" IRON PIPE WITH 2 3/8" BC.  
 IN PLACE OF CRAMER & KIMBRELL IRON PIPES, HE BURIED 1" IRON BAR, 1" IRON PIPE AND 1 1/2" IRON PIPE ALONG SIDE.

MONUMENTS AND ACCESSORIES FOUND: CONDITION AND SOURCE

AN ALUMINUM TAG #951 ON A POWER POLE LIES S 77°57'15" W, 17.51 FEET.  
 AN ALUMINUM TAG #951 ON A POWER POLE LIES S 83°37'50" E, 36.99 FEET.  
 AN ALUMINUM TAG #951 ON A RXR TIE FENCE POST LIES N 0°50'45" E, 53.33 FEET.  
 A 2" ALUMINUM CAP STAMPED AS BELOW.

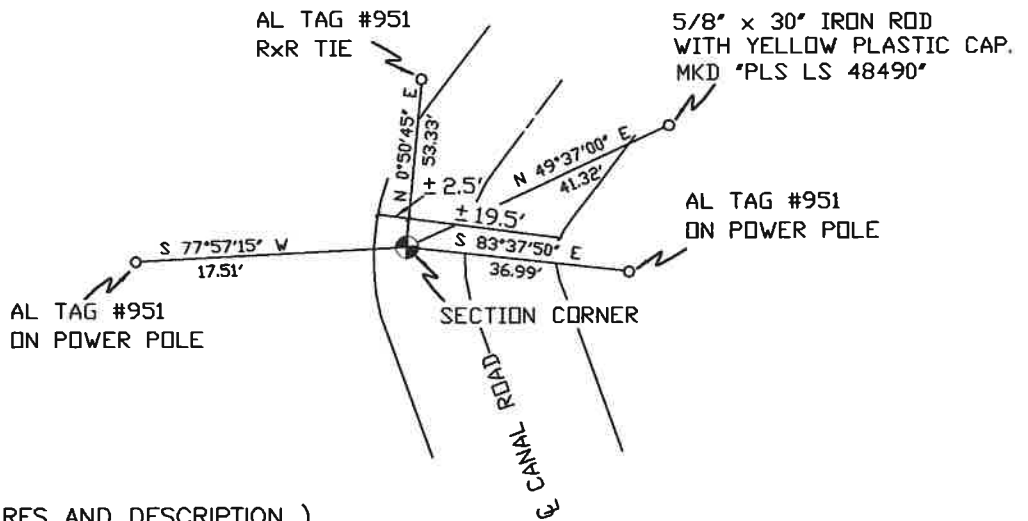
MONUMENT DETAIL

SKETCH



NAD 83/91  
 OREGON STATE PLANE  
 INTERNATIONAL FEET

798351.25  
 8526804.82



MONUMENT SET ( PROCEDURES AND DESCRIPTION )

PLACED A 2" ALUMINUM CAP ON EXISTING 5/8" IRON ROD, STAMPED AS ABOVE.

NEW ACCESSORIES FROM WHICH

A 5/8" x 30" IRON ROD WITH A YELLOW PLASTIC CAP MKD "PLS LS 48490" LIES N 49°37'00" E, 41.32 FEET.

LOCATION AND COMMENTS

FROM INTERSECTION OF BAXTER RD.  
 AND CANAL RD. GO SOUTH ON CANAL  
 1/2 MILE TO CORNER.

COMPASS DEC.

FIRM/AGENCY  
 PRIMM LAND SURVEYING  
 P.O. BOX 1322  
 HERMISTON, OREGON 97838

PARTY CHIEF  
 BRIT L. PRIMM

NOTES

WITNESS  
 KEITH P. PRIMM

SURVEYOR'S SEAL

REGISTERED  
 PROFESSIONAL  
 LAND SURVEYOR

*Keith P. Primm*  
 OREGON  
 JULY 12, 2005  
 KEITH P. PRIMM  
 48490

EXPIRATION DATE: 12/31/20

*IMA* 21-204-C

01 DEC 20