

OREGON CORNER RESTORATION FORM

SECTION 6,7 TOWNSHIP 4 NORTH RANGE 29 EAST

E-3

COUNTY : UMATILLA DATE 02/02

CORNER DESIGNATION

1/4 CORNER

X CONDITION REPORT ONLY

- NOT FOUND
- RENEWED
- UNCOVERED
- SURVEYED IN
- REFERENCED

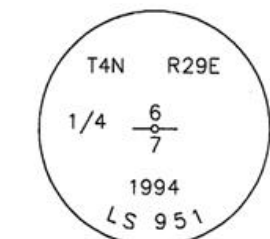
PREVIOUS RENEWALS / SURVEYS, ETC.

ORIGINALLY SURVEYED IN 1861 BY DAVENPORT UNDER CONTRACT #101. HE SET A POST IN A MOUND OF EARTH AND A CHARRED STAKE.
 IN ±1979 KRUMBEIN SET A BC.
 IN 1987 CRAMER SET A 1 1/2" IP
 IN 1994 EDWARDS SET A 1" x 30" IRON PIPE WITH A 2 3/8" BRASS CAP STAMPED AS BELOW OVER 1" IRON ROD AND BURIED CRAMERS 1 1/2" IP ALONG N. SIDE.

MONUMENTS AND ACCESSORIES FOUND: CONDITION AND SOURCE

A 2 3/8" BC STAMPED AS BELOW LIES N 89°34'37" E, 20.08 FEET.
 A 2 3/8" BC STAMPED AS BELOW LIES S 89°25'44" W, 23.01 FEET.
 AN ALUMINUM TAG #951 ON A LOCUST FENCE POST LIES N 8°13'59" E, 125.50 FEET.
 AN ALUMINUM TAG #951 ON A LOCUST FENCE POST LIES S 16°49'31" E, 68.87 FEET.

MONUMENT DETAIL

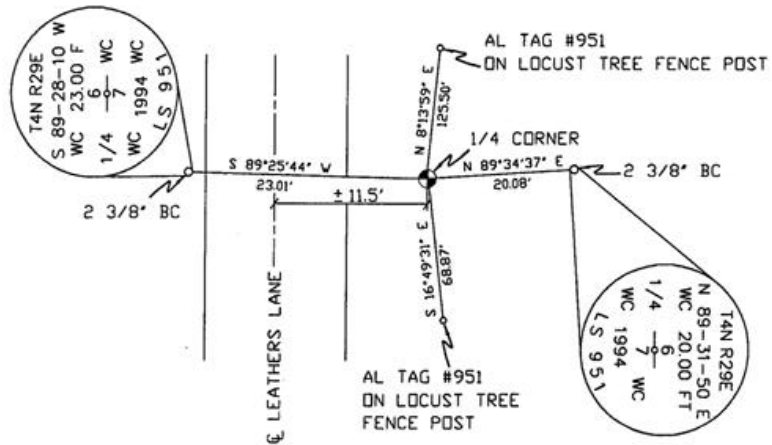


NAD 83/91
 OREGON STATE PLANE
 INTERNATIONAL FEET

798286.6903
 8524164.7418



SKETCH



MONUMENT SET (PROCEDURES AND DESCRIPTION)

NEW ACCESSORIES FROM WHICH

LOCATION AND COMMENTS

FROM INTERSECTION OF BAXTER RD.
 AND LEATHERS LANE GO SOUTH 1/2
 MILE ON LEATHERS LANE TO CORNER.

COMPASS DEC.

FIRM/AGENCY
 PRIMM LAND SURVEYING
 P.O. BOX 1322
 HERMISTON, OREGON 97838

PARTY CHIEF
 KEITH P. PRIMM

NOTES

WITNESS
 BRIT L. PRIMM

SURVEYOR'S SEAL

REGISTERED
 PROFESSIONAL
 LAND SURVEYOR

Brit L. Primm

OREGON
 JULY 13, 1999
 BRIT L. PRIMM
 48509

EXPIRATION DATE:12/31/02

03-52-9