

OREGON CORNER RESTORATION FORM

SECTION 1,2,11,12 TOWNSHIP 4 NORTH RANGE 29 EAST E-21
 COUNTY : UMATILLA DATE MAY/20

CORNER DESIGNATION

SECTION CORNER

- CONDITION REPORT ONLY
- NOT FOUND
- RENEWED
- UNCOVERED
- SURVEYED IN
- REFERENCED

PREVIOUS RENEWALS / SURVEYS, ETC.

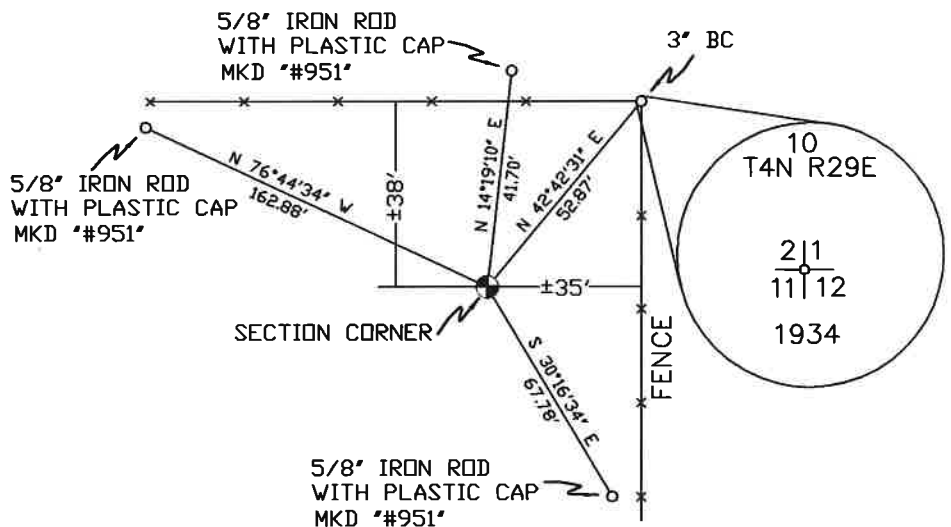
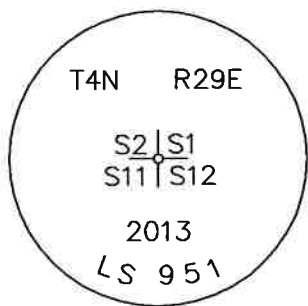
ORIGINALLY SURVEYED IN 1861 BY DAVENPORT UNDER CONTRACT #101. HE SET A POST IN A MOUND OF EARTH AND A CHARRED STAKE.
 U.S. DEPT. OF AGRICULTURE SURVEY IN 1934, NO RECORD.
 EDWARDS SET A 2 3/8" BC IN 2013.

MONUMENTS AND ACCESSORIES FOUND: CONDITION AND SOURCE

A 5/8" IRON ROD WITH A PLASTIC CAP "#951" LIES S 30°16'34" E, 67.78 FEET.
 A 5/8" IRON ROD WITH A PLASTIC CAP "#951" LIES N 76°44'34" W, 162.88 FEET.
 A 5/8" IRON ROD WITH A PLASTIC CAP "#951" LIES N 14°19'10" E, 41.70 FEET.
 U.S. DEPT. OF AGRICULTURE 3" BRASS DISK IN CONC. POST LIES N 42°42'31" E, 52.87 FEET.
 A 2 3/8" BC STAMPED AS BELOW.

MONUMENT DETAIL

SKETCH



NAD 83/91
 OREGON STATE PLANE
 INTERNATIONAL FEET

798847.51
 8547908.21

MONUMENT SET (PROCEDURES AND DESCRIPTION)

NEW ACCESSORIES FROM WHICH

LOCATION AND COMMENTS

FROM SOUTH ENTRANCE OF COLD SPRINGS WILDLIFE REFUGE, GO EAST 0.5 MILES ALONG FENCE.

COMPASS DEC.

FIRM/AGENCY
 PRIMM LAND SURVEYING
 P.O. BOX 1322
 HERMISTON, OREGON 97838

PARTY CHIEF
 PAUL P. PILCH

NOTES

WITNESS
 KEITH P. PRIMM

SURVEYOR'S SEAL

REGISTERED
 PROFESSIONAL
 LAND SURVEYOR

Keith P. Primm
 OREGON
 JULY 12, 2005
 KEITH P. PRIMM
 48490

EXPIRATION DATE: 12/31/20

JMA

21-004-C

01 DEC 20