

# OREGON CORNER RESTORATION FORM

SECTION 4,9 TOWNSHIP 4 NORTH RANGE 29 EAST

E-11

COUNTY : UMATILLA DATE MAY/20

CORNER DESIGNATION

1/4 CORNER

- CONDITION REPORT ONLY
- NOT FOUND
- RENEWED
- UNCOVERED
- SURVEYED IN
- REFERENCED

PREVIOUS RENEWALS / SURVEYS, ETC.

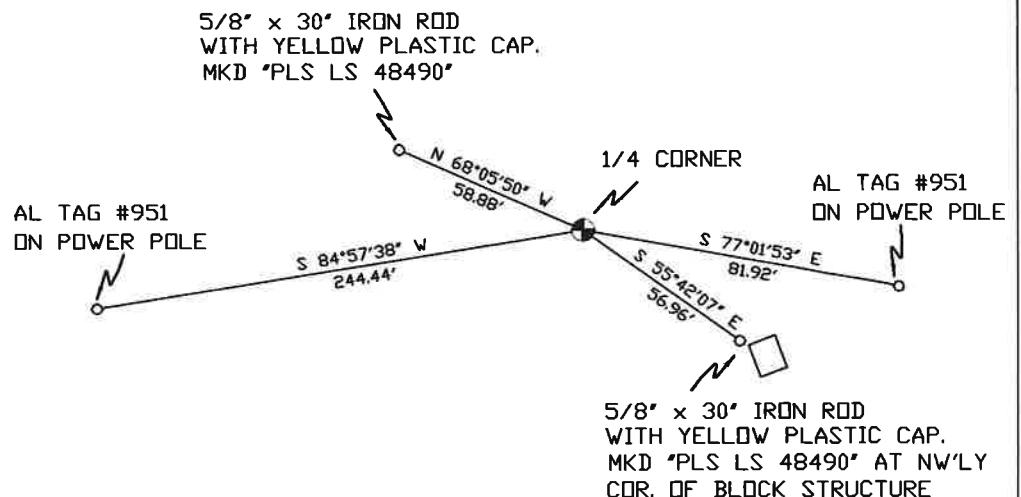
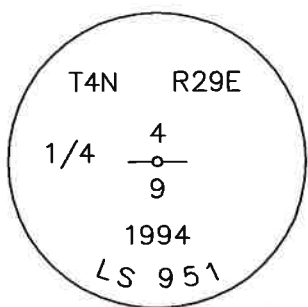
ORIGINALLY SURVEYED IN 1861 BY DAVENPORT UNDER CONTRACT #101. HE SET A POST IN A MOUND OF EARTH AND A CHARRED STAKE.  
 KIMBRELL SET A 1 1/2" IRON PIPE IN 1910.  
 EDWARDS SET A 2 3/8" BC IN 1994.

MONUMENTS AND ACCESSORIES FOUND: CONDITION AND SOURCE

AN ALUMINUM TAG #951 ON A POWER POLE LIES S 84°57'38" W, 244.44 FEET.  
 AN ALUMINUM TAG #951 ON A POWER POLE LIES S 77°01'53" E, 81.92 FEET.  
 A 2 3/8" BC STAMPED AS BELOW.

MONUMENT DETAIL

SKETCH



NAD 83/91  
 OREGON STATE PLANE  
 INTERNATIONAL FEET

798554.38  
 8534725.46

MONUMENT SET ( PROCEDURES AND DESCRIPTION )

NEW ACCESSORIES FROM WHICH

A 5/8" x 30" IRON ROD WITH A YELLOW PLASTIC CAP MKD "PLS LS 48490" LIES N 68°05'50" W, 58.88 FEET.  
 A 5/8" x 30" IRON ROD WITH A YELLOW PLASTIC CAP MKD "PLS LS 48490" LIES S 55°42'07" E, 56.96 FEET.

LOCATION AND COMMENTS

FROM INTERSECTION OF PUNKIN CENTER RD. AND EDWARDS RD., GO SOUTH 1 MILE TO GRAVEL RD., THEN GO EAST ON GRAVEL RD. 1/2 MILE TO CORNER.

COMPASS DEC.

FIRM/AGENCY  
 PRIMM LAND SURVEYING  
 P.O. BOX 1322  
 HERMISTON, OREGON 97838

PARTY CHIEF  
 KEITH P. PRIMM

NOTES

WITNESS  
 KEITH P. PRIMM

SURVEYOR'S SEAL

REGISTERED  
 PROFESSIONAL  
 LAND SURVEYOR

*Keith P. Primm*  
 OREGON  
 JULY 12, 2005  
 KEITH P. PRIMM  
 48490

EXPIRATION DATE: 12/31/20

*IPD*

21-004-C

01 DEC 20